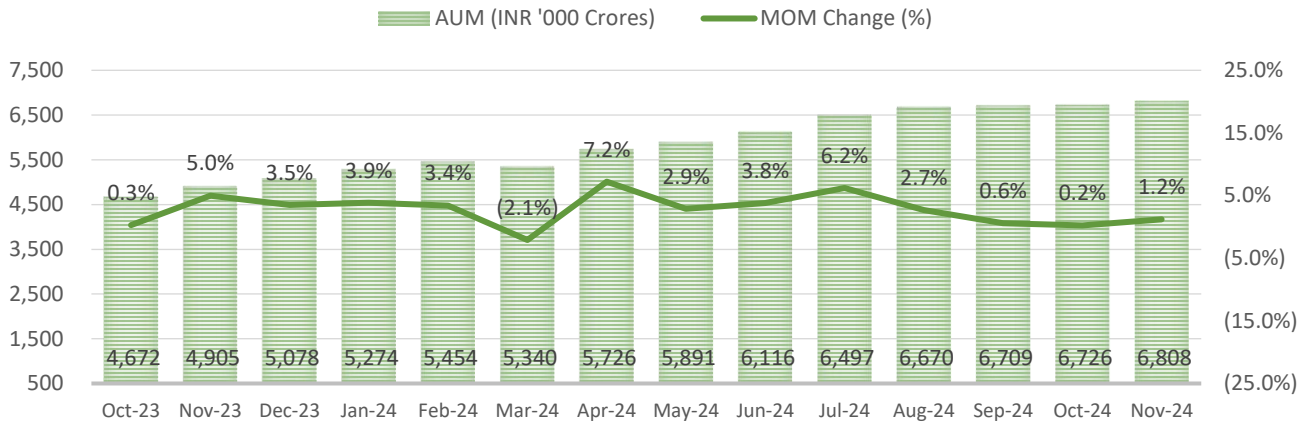


Mutual Fund Industry Analysis

December 10, 2024

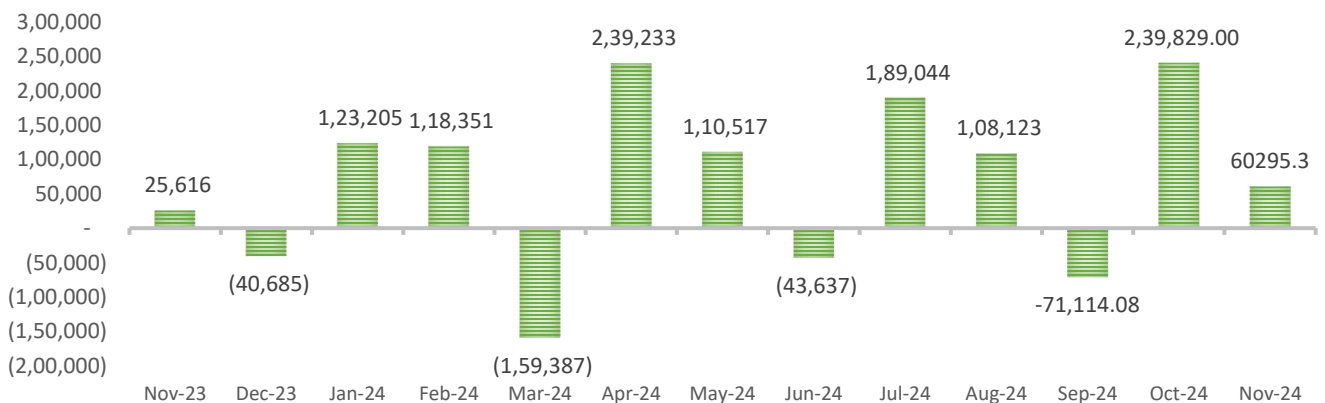
INDUSTRY AUM TREND ('000 CR.) & MOM CHANGE (%)



Source: AMFI, W2W MF Research

- Mutual Fund assets rose by 1.2% and stood at 68.08 lakh Cr in Nov 2024 (vs 67.26 lakh Cr in the previous month).
- The industry witnessed a decline in sales, which amounted to 10.51 lakh crore, a decrease from the previous 12.31 lakh crore. Redemptions also adjusted to 9.55 lakh crore, compared to 9.91 lakh crore in the preceding month. Notably, sales decreased by 14.61% and redemptions by 3.64% in November 2024, reflecting significant shifts in market activity.

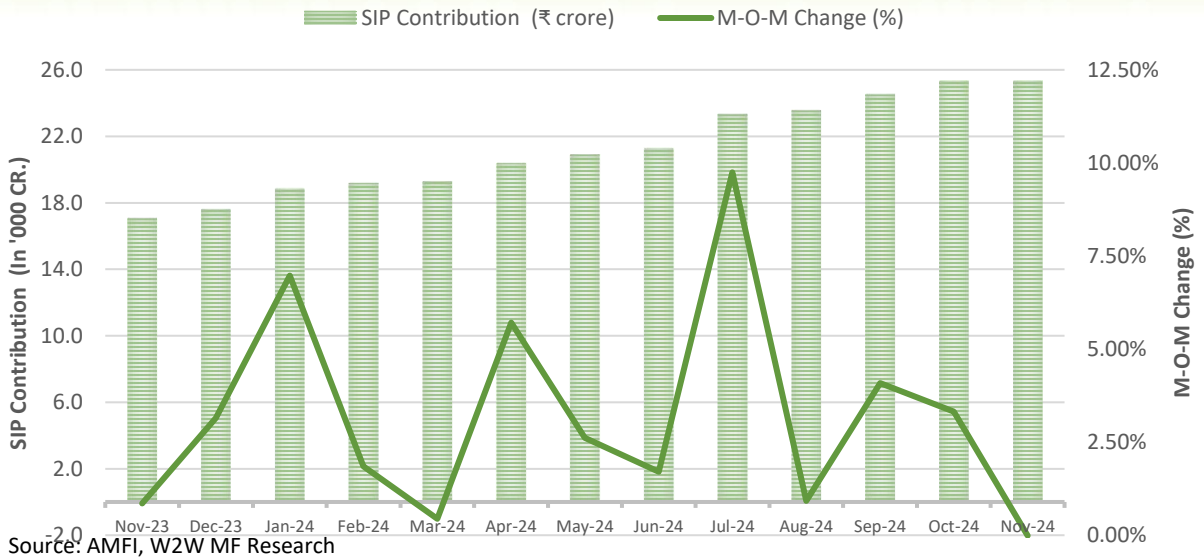
INDUSTRY NET INFLOWS / OUTFLOWS (RS IN CR.)



Source: AMFI, W2W MF Research

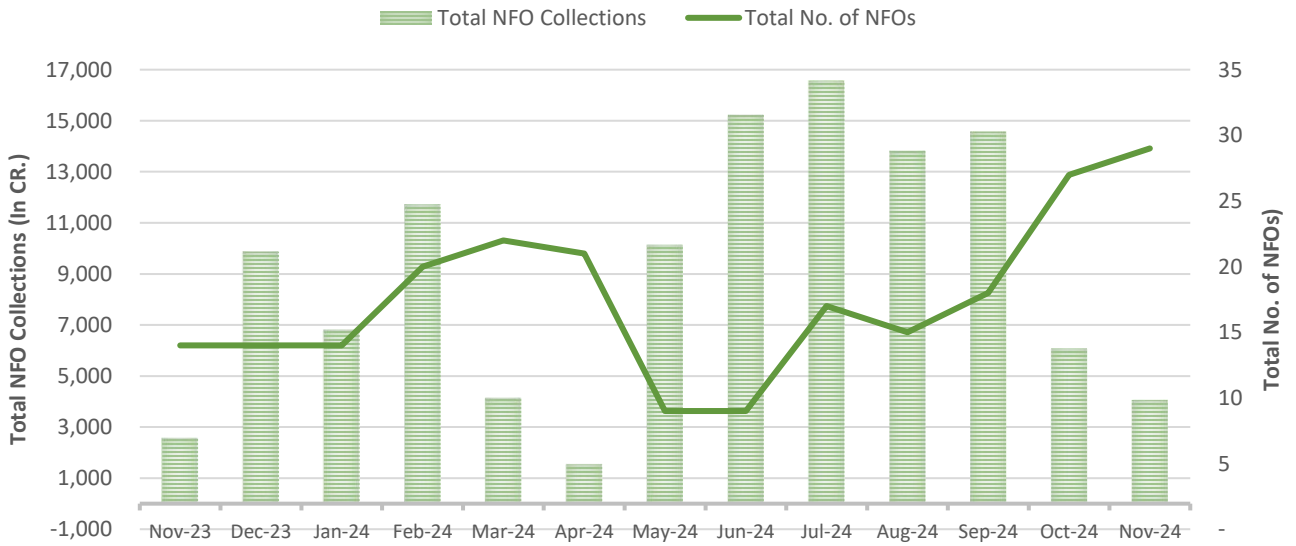
- The industry witnessed an inflow of 60.30 thousand crore in November 2024, compared to an inflow of 2.39 lakh crore in the previous month, due to significant inflows in equity, specifically in sectoral and thematic funds.

Mutual Fund Industry Analysis SIP FLOWS



- Mutual fund SIP inflows amounted to 25,320 crore in November 2024, slightly down from 25,323 crore in October.

NFO COLLECTIONS (RS IN CR.)

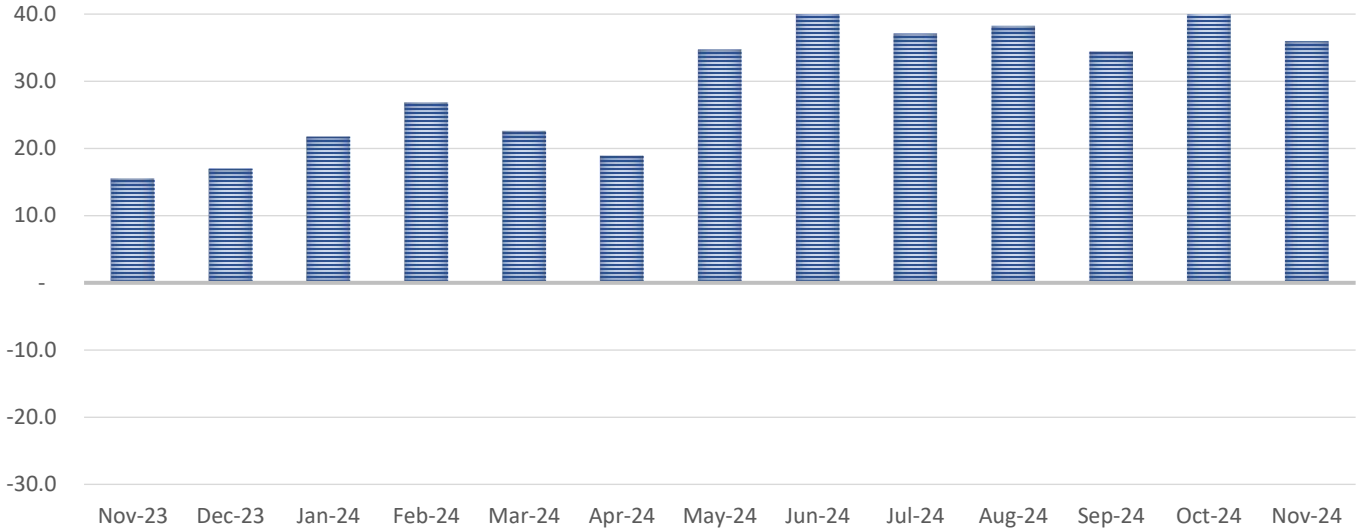


Source: AMFI, W2W MF Research

- The NFO collections for the month decreased to 4,052 crore, compared to 6,078 crore in the previous month, despite the launch of 18 new schemes.

Equity AUM Comparison and Analysis

Net Equity Inflow / Outflow ('000 Crores)



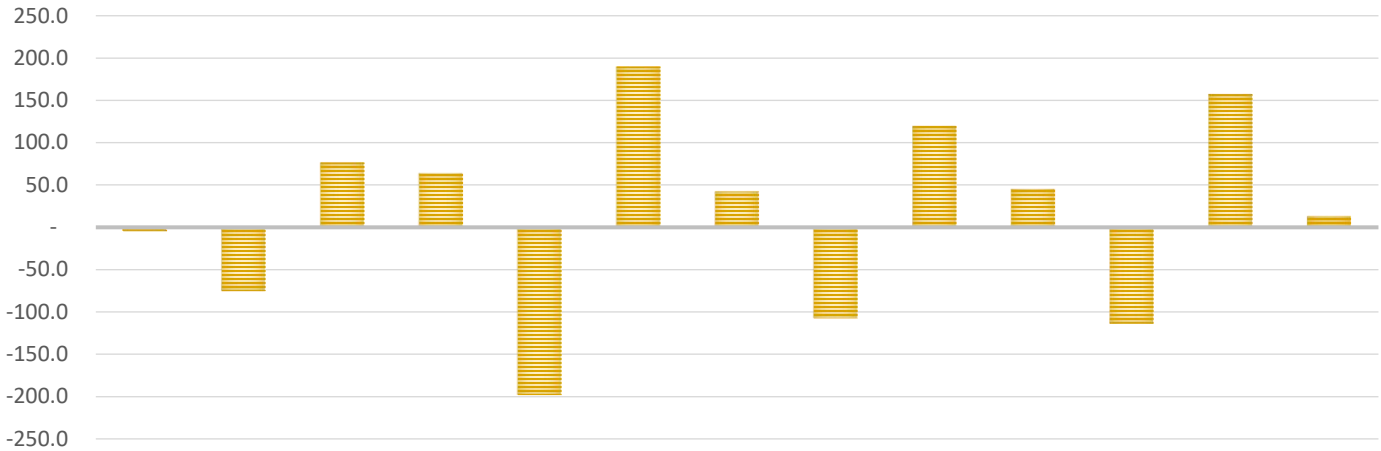
	Nov-23	Dec-23	Jan-24	Feb-24	Mar-24	Apr-24	May-24	Jun-24	Jul-24	Aug-24	Sep-24	Oct-24	Nov-24
Equity	15.5	17.0	21.8	26.9	22.6	18.9	34.7	40.6	37.1	38.2	34.4	41.9	35.9

Source: AMFI, W2W MF Research

- The equity open-ended category experienced an increase in net inflows of 35,943 crores, compared to 41,887 crores in the previous month. All equity open-ended categories witnessed an inflow of funds.
- Among equity categories, the sectoral/thematic category continued to garner the highest inflows, amounting to 7,657 crores. The flexi cap and large and mid cap fund categories also witnessed significant inflows of 5,084 crores and 4,883 crores, respectively.
- Overall, the category saw a growth of 0.28% compared to 5.13% in the previous month.

Debt AUM Comparison and Analysis

Net Debt Inflow / Outflow ('000 Crores)



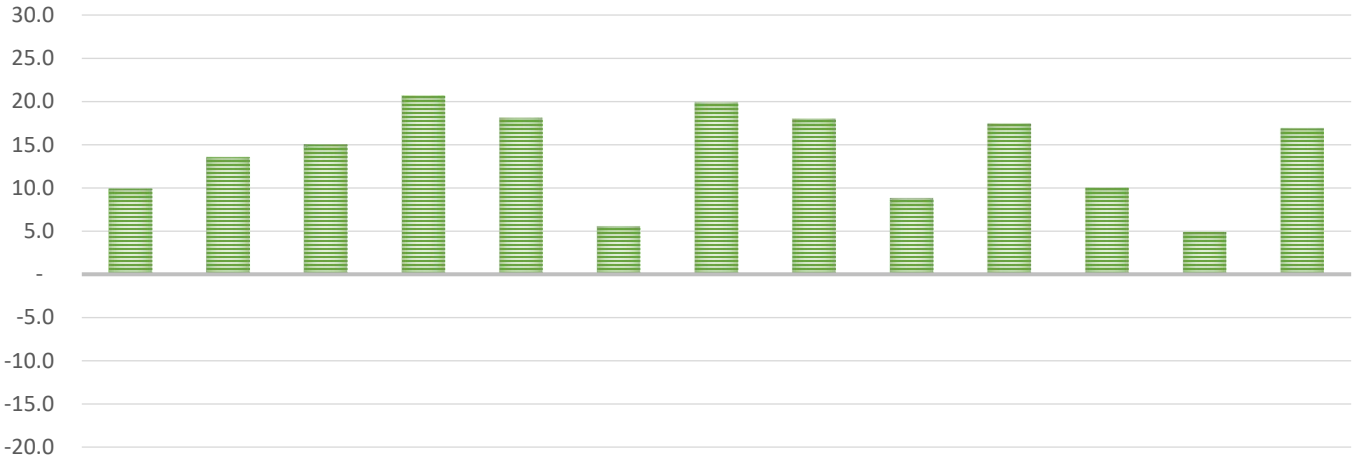
	Nov-23	Dec-23	Jan-24	Feb-24	Mar-24	Apr-24	May-24	Jun-24	Jul-24	Aug-24	Sep-24	Oct-24	Nov-24
■ Debt	-4.7	-75.6	76.5	63.8	-198.3	189.9	42.3	-107.4	119.6	45.2	-113.8	157.4	12.9

Source: AMFI, W2W MF Research

- The debt open-ended category saw an inflow of 12,916 crores, compared to an inflow of 1,57,402 crores the previous month. Notably, the low duration fund category experienced a significant inflow of 4,374 crores.
- In the debt category, major inflows were also observed in the ultra short duration fund and money market fund, amounting to 2,962 crores and 2,426 crores, respectively.
- Overall, the debt category depreciated by 1.93% compared to 8.10% in the previous month. Meanwhile, the liquid and short duration fund experienced outflows of 1,779 crores and 454crores, respectively

Hybrid AUM Comparison and Analysis

Net Hybrid Inflow / Outflow ('000 Crores)



	Nov-23	Dec-23	Jan-24	Feb-24	Mar-24	Apr-24	May-24	Jun-24	Jul-24	Aug-24	Sep-24	Oct-24	Nov-24
Hybrid	9.9	13.5	15.0	20.6	18.1	5.6	19.9	18.0	8.9	17.4	10.0	4.9	16.9

Source: AMFI, W2W MF Research

- In November 2024, the hybrid category saw inflows totaling 4,124 crores, a decrease from the previous month's 4,901 crores..
- The balanced hybrid fund category experienced the highest inflow, amount at 1,224 crores, followed by the conservative hybrid category with 184 crores.
- Overall, the hybrid category witnessed a capital depreciation of 0.63% for the month.

M-O-M Category Flows (Rs in Cr.)

Category	Nov-23	Dec-23	Jan-24	Feb-24	Mar-24	Apr-24	May-24	Jun-24	Jul-24	Aug-24	Sep-24	Oct-24	Nov-24
Equity Growth													
Multi Cap Fund	1,713	1,852	3,039	2,414	1,827	2,724	2,645	4,709	7,084.61	2,475.06	3,508.88	3,596.91	3,626.46
Large Cap Fund	307	(281)	1,287	921	2,128	358	663	970	670	2,636.86	1,769	3,452.34	2,547.92
Large & Mid Cap Fund	1,847	2,339	2,330	3,157	3,216	2,639	2,397	2,912	2,622	3,293.74	3,598	4,857.14	4,679.74
Mid Cap Fund	2,666	1,393	2,061	1,808	1,018	1,793	2,606	2,528	1,644	3,054.68	3,130	4,682.90	4,883.40
Small Cap Fund	3,699	3,858	3,257	2,922	(94)	2,209	2,725	2,263	2,109	3,209.33	3,071	3,771.97	4,111.89
Dividend Yield Fund	173	279	382	94	323	341	445	520	631	499.91	1,530	532.82	215.65
Value Fund/Contra Fund	1,252	1,269	1,842	1,867	1,708	1,987	1,404	2,027	2,171	1,728.01	1,964	2,456.63	2,088.01
Focused Fund	143	(491)	(202)	(533)	63	(328)	(307)	(287)	(620)	-83.52	(273)	693.16	430.03
Sectoral/Thematic Funds	1,965	6,005	4,805	11,263	7,918	5,166	19,213	22,352	18,386	18,117.18	13,255	12,278.78	7,657.75
ELSS	104	(314)	533	339	1,789	(144)	(250)	(445)	(638)	-205.25	(349)	383.36	618.52
Flexi Cap Fund	1,668	1,087	2,447	2,613	2,738	2,173	3,155	3,059	3,053	3,513.16	3,215	5,180.69	5,084.11
Sub Total	15,536	16,997	21,781	26,866	22,633	18,917	34,697	40,608	37,113	38,239	34,419	41,886.69	35,943.49
Debt Oriented Schemes													
Overnight Fund	(484)	(4,865)	8,995	(17,376)	(6,992)	21,195	6,645	(25,143)	26	15,106	(19,363)	25,783.59	2,019.34
Liquid Fund	(645)	(39,675)	49,468	83,642	(1,57,970)	1,02,751	25,873	(80,354)	195	13,595	(72,666)	83,863.34	-1,778.98
Ultra Short Duration Fund	(1,866)	(6,030)	2,937	(362)	(9,135)	11,105	1,647	(2,327)	1,798	696	(6,282)	7,053.79	2,961.98
Low Duration Fund	(968)	(9,432)	2,116	(4,100)	(6,157)	7,758	461	2,199	3,126	(390)	679	5,600.29	4,374.41
Money Market Fund	865	(8,384)	10,651	137	(8,720)	34,084	8,272	9,590	11,015	10,093	(23,421)	25,303.45	2,426.11
Short Duration Fund	(414)	595	(223)	2,346	(6,450)	2,533	(73)	(1,094)	1,277	4,360	1,435	1,362.43	-454.30
Medium Duration Fund	(280)	(436)	(211)	(388)	(364)	(425)	(539)	(462)	17,436	57	305	-149.46	-201.071293
Medium to Long Duration Fund	(73)	(30)	19	(7)	(110)	47	40	128	57.42	104	162	99.16	-243.0113784
Long Duration Fund	87	272	582	631	772	581	482	281	786.75	982	1,490	1,117.47	79.60
Dynamic Bond Fund	(134)	(136)	(63)	132	(138)	853	(138)	(352)	206.60	577	116	514.54	313.9391812
Corporate Bond Fund	(1,578)	188	1,301	3,029	(292)	2,992	687	(3,469)	2,261.04	667	5,039	4,644.40	2,137.79
Credit Risk Fund	(254)	(368)	(303)	(366)	(321)	(359)	(540)	(478)	-542.83	(390)	(484)	-357.81	-195.9003932
Banking and PSU Fund	305	(661)	(501)	(480)	232	(405)	40	(2,822)	-307.93	(1,550)	(1,978)	936.54	-259.1322799
Gilt Fund	92	(482)	413	539	(538)	5,210	(171)	(1,213)	1,261.63	1,902	2,317	1,375.57	1,802.73
Gilt Fund with 10 year constant duration	(8)	54	66	42	58	349	157	(846)	-42.15	38	31	102.91	274.5301897
Floater Fund	648	(6,171)	1,221	(3,610)	(2,173)	1,619	(546)	(996)	314.42	(677)	(1,216)	152.08	-342.1317935
Sub Total	(4,707)	(75,560)	76,469	63,809	(1,98,299)	1,89,891	42,295	(1,07,358)	1,19,588	45,169	(1,13,834)	1,57,402.30	12,915.90
Hybrid Schemes													
Conservative Hybrid Fund	3	(103)	47	(106)	4	(8)	(99)	(131)	26	(187)	(126)	310.51	-36.61
Balanced Hybrid Fund/Aggressive Hybrid Fund	72	(403)	448	29	536	17	43	49	195	321	516	1,370.60	913.97
Dynamic Asset Allocation/Balanced Advantage	590	1,369	1,340	1,287	1,733	1,345	1,279	644	1,798	3,215	1,704	2,456.18	1,569.65
Multi Asset Allocation	2,589	2,420	7,080	4,043	2,681	3,313	3,161	3,453	3,126	2,827	4,070	3,796.69	2,443.87
Arbitrage Fund	9,404	10,645	10,608	11,508	(298)	13,901	12,758	3,837	11,015	2,372	(3,532)	7,181.70	-1,352.88
Equity Savings	880	1,080	1,114	1,344	928	1,295	849	1,003	1,277	1,457	2,269	1,747.61	585.69
Sub Total	13,538	15,009	20,637	18,105	5,584	19,863	17,991	8,855	17,436	10,005	4,901	16,863.30	4,123.69
Grand Total	25,616	(40,685)	1,23,205	1,18,351	(1,59,387)	2,39,233	1,10,517	(43,637)	1,89,044	1,08,123	(71,114)	2,39,828.69	60,295.30

**Disclaimer, Disclosure and Copyright Notice**

The contents of this material are general and are neither comprehensive nor appropriate for every individual and are solely for the informational purposes of the readers. This material does not take into account the specific investment objectives, financial situation or needs of an individual/s or a Corporate/s or any entity/s. A qualified professional should be consulted before making an investment decision or acting on any information contained in this material. All investments involve risk and past performance does not guarantee future results. Investigate before you invest. You are strongly cautioned to verify any information before using it for any personal or business purpose.

Way2wealth Brokers (P) Limited (herein after called Way2Wealth) does not guarantee the accuracy, quality or completeness of any information. Much of the information is relevant only in India.

Way2wealth makes no warranties, either express or implied, including, but not limited to warranties of suitability, fitness for a particular purpose, accuracy, timeliness, completeness or non-infringement. In no event shall Way2Wealth be liable for any damages of any kind, including, but not limited to, indirect, special, incidental, consequential, punitive, lost profits, or lost opportunity, whether or not Way2Wealth has been advised of the possibility of such damages. This material contains statements that are forward-looking; such statements are based upon the current beliefs and expectations and are subject to significant risks and uncertainties. Actual results may differ from those set forth in the forward-looking statements. These uncertainties include but are not limited to: the risk of adverse movements or volatility in the securities markets or in interest or foreign exchange rates or indices; adverse impact from an economic slowdown; downturn in domestic or foreign securities and trading conditions or markets; increased competition; unfavorable political and diplomatic developments; change in the governmental or regulatory policies; failure of a corporate event and such others.

This is not an offer to buy or sell or a solicitation of an offer to buy or sell any security or instrument or to participate in any particular trading strategy. No part of this material may be copied or duplicated in any form by any means or redistributed without the written consent of Way2Wealth. In no event shall any reader publish, retransmit, redistribute or otherwise reproduce any information provided by Way2Wealth in any format to anyone. Way2Wealth and its affiliates, officers, directors and employees including the persons involved in the preparation or issuance of this report may from time to time have interest in securities thereof, of companies mentioned herein.

Way2Wealth Brokers Private Limited**Registered Office Address**

Rukmini Towers, 3rd & 4th Floor, # 3/1, Platform Road, Sheshadripuram, Bangalore - 560 020. Tel.: (080) 43676869, (080) 23564556/23561952

Corporate Office Address

101-104, A Wing, 1st Floor, Dynasty Business Park, JB Nagar, Andheri-Kurla Road, Andheri (E), Mumbai – 400 059. Tel.: (+91 22) 40192900/61462900

www.way2wealth.com