



## Market Overview

Frontline indices, Nifty 50 and Sensex ended in the green on Tuesday, breaking a seven-day losing streak supported by mixed global cues and consistent buying by domestic institutional investors. The Barometer BSE Sensex climbed 169.62 points to settle at 76,499.63 with 19 constituents among the 30-share index ending in green while NSE Nifty 50 advanced 90.10 points to close at 23,176.05 points. Almost every sector contributed to the rally with PSU Bank and Metal stocks leading the sectoral charts. Among individual stocks, Adani Enterprises Ltd and Hindalco Industries Ltd were the top performers, rising 6.98% and 4.82% respectively. In contrast, HCL Technologies Ltd was the biggest laggard, falling 8.84%. The overall market breadth showed a positive shift with 2823 stocks advancing and 1144 stocks declining. In terms of institutional participation, Foreign Institutional Investors (FIIs) continued to show bearish sentiment, offloading equities worth Rs 8,132.26 crore. Meanwhile, Domestic Institutional Investors (DIIs) maintained their bullish stance, purchasing shares worth Rs 7,901.06 crore.

## Key Economic Events for the Week

Date	Country	Economic event
13-01-2025	CN	Balance of Trade
13-01-2025	IN	Inflation Rate MoM & YoY
14-01-2025	JP	Current Account
14-01-2025	IN	WPI Inflation YoY
14-01-2025	US	PPI MoM
15-01-2025	GB	Inflation Rate MoM & YoY
15-01-2025	GB	Core Inflation Rate MoM & YoY
15-01-2025	US	Inflation Rate MoM & YoY
15-01-2025	US	Core Inflation Rate MoM & YoY
15-01-2025	US	Change in Crude Oil Inventories
15-01-2025	IN	Balance of Trade
16-01-2025	GB	GDP MoM & YoY
16-01-2025	US	Retail Sales MoM
17-01-2025	CN	GDP Growth Rate YoY
17-01-2025	CN	Industrial Production YoY
17-01-2025	GB	Retail Sales MoM & YoY

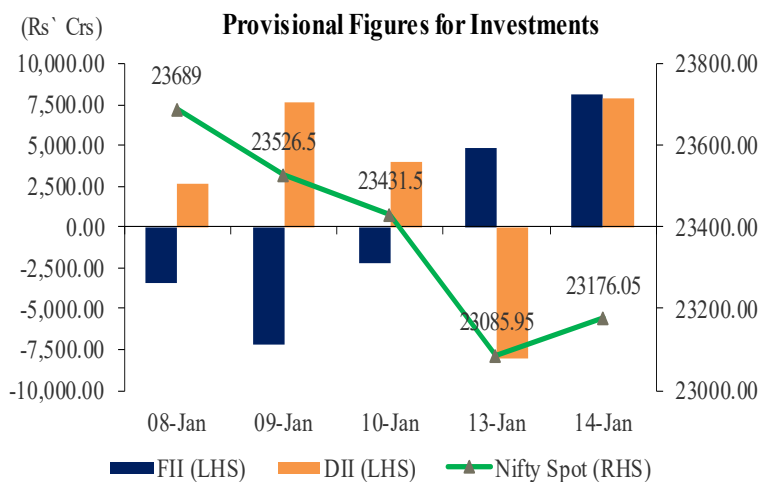
## Asian Indices

Live Markets	As on 08.00 hours IST			
	Shanghai	Nikkei	Gift Nifty	Hang Seng
Current Quote	3,235.26	38,577.29	23,285.50	19,208.31
% Change	-0.18%	0.27%	0.10%	-0.06%

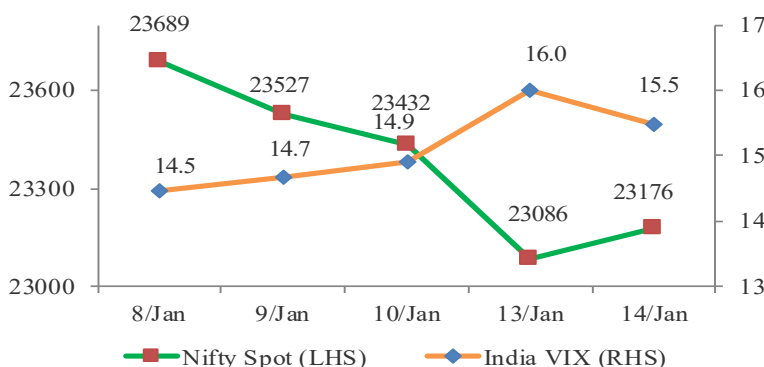
## Sectoral Indices

Index	Last Close	% Change	P/E	Dividend Yield (%)
Sensex	76,500	0.2	22.41	1.17
Nifty	23,176	0.4	21.34	1.30
Nifty Midcap 50	14,970	2.2	46.86	0.82
Nifty Auto	22,833	2.0	22.28	0.98
Nifty Bank	48,729	1.4	13.11	1.02
Nifty Energy	33,568	2.9	15.33	2.32
Nifty Fin. Services	22,722	1.4	15.76	0.94
Nifty FMCG	55,627	-1.4	45.41	1.86
Nifty IT	43,061	-2.1	33.58	1.92
Nifty Metal	8,268	4.0	19.76	2.49
Nifty PSU Bank	6,145	4.2	6.99	2.40
Nifty Realty	908	0.8	46.97	0.41
Nifty Pharma	22,204	1.4	35.13	0.61

## NIFTY Vs. Institutional Activity



## NIFTY vs India VIX



## NSE Volume Movement

Particulars	13-Jan-25	14-Jan-25	% Change
Traded Value (Rs. In Crores)	105028	103215	-1.73%
Traded Quantity (in Lakhs)	40208	36262	-9.81%
Number of Trades	47973003	40913379	-14.72%
Total Market Cap. (Rs. In Crores)	41423556	42032868	0.00%



## Business News

The subsidiaries of the company **Premier Energies**, Premier Energies Global Environment, Premier Energies International and Premier Energies Photovoltaic have secured multiple orders worth Rs 1,460 crore from two major independent power producers (IPPs) and other clients. These orders comprise Rs 1,041 crore for solar modules and Rs 419 crore for solar cells, with the supply of modules slated to begin in May 2025.

The subsidiary of the company **Adani Green Energy**, Adani Renewable Energy Forty Eight has commissioned a 57.2 MW wind power component of its wind-solar hybrid project at Khavda, Gujarat. With this commissioning, the company's total operational renewable energy capacity has risen to 11,666.1 MW.

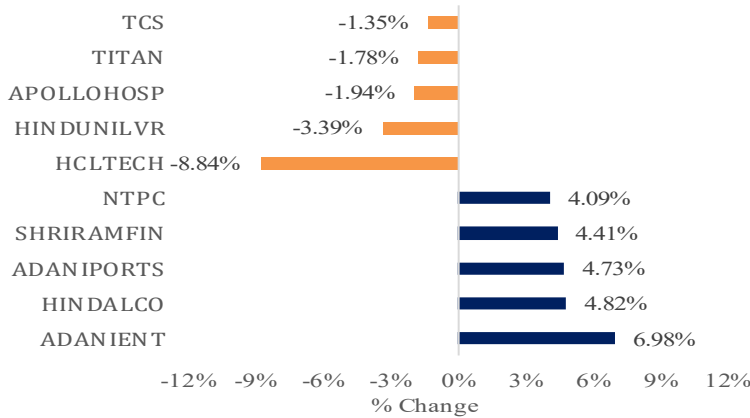
The company **Techknowgreen Solutions** has received a work order worth Rs 3.13 crore from Gargantuan Industrial Space Solutions.

The company **IRFC** has emerged as the L1 bidder for financing Rs 3,167 crore for the development of the Banhardih coal block in Latehar District, Jharkhand. This project is being undertaken by Patratu Vidyut Utpadan Nigam, a joint venture between NTPC and Jharkhand Bijli Vitran Nigam. The Banhardih Coal Block has been allocated to PVUNL as a captive coal source.

The company **Welspun Corp** has signed an MoU with Saudi Aramco for strategic cooperation to establish LSAW line pipe manufacturing capacity in the Kingdom of Saudi Arabia. The production capacity of this plant will be 350,000 MT per annum.



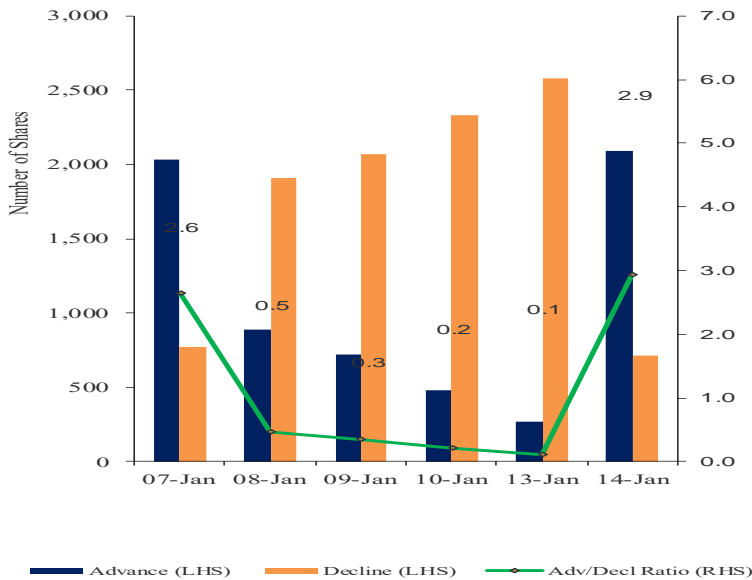
## Top Gainers/Losers



## Global Indices

Index	Last Close	Change in %
DJIA	42,518	0.52%
S&P 500	5,843	0.11%
NASDAQ	19,044	-0.23%
FTSE100	8,202	-0.28%
CAC	7,424	0.20%
DAX	20,271	0.69%
KOSPI	2,503	0.21%

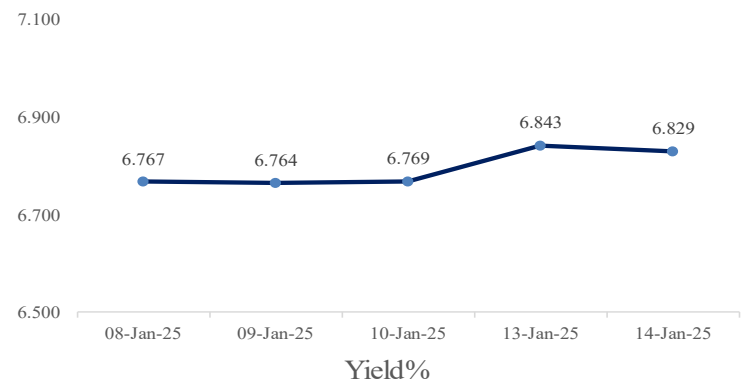
## Advance – Decline



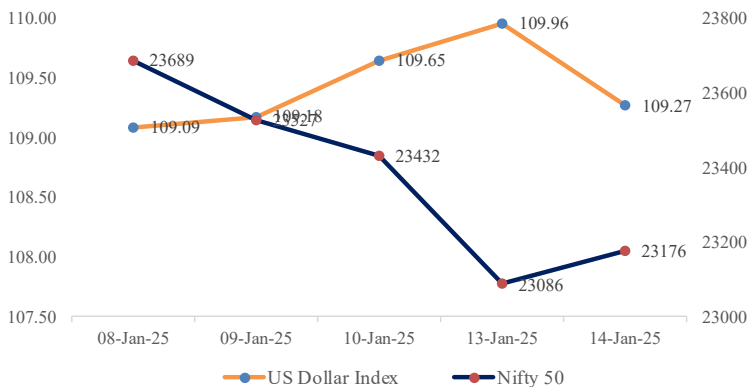
## Indian ADR

(Converted to INR)	Prem / (Disc) in (%)		
	Close	NSE Close	1 Day
Infosys	22.51	1940.05	-0.011
Icici Bank	28.44	1240.30	0.009
Drreddy	15.32	1337.55	0.002
Hdfc Bank	58.53	1646.60	0.010
Wipro	3.43	292.85	0.003

## 10 Years GOI Bond Yield (%)



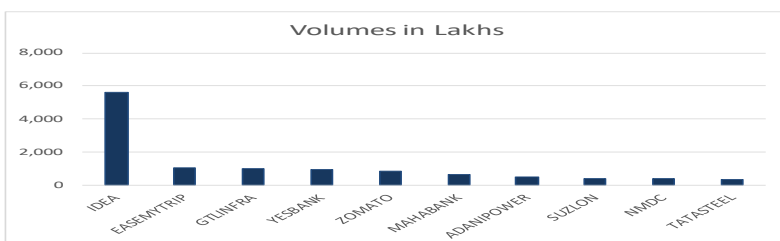
## NIFTY vs Dollar Index



## Commodities

	Last Close	% Change	YoY (%)
<b>Energy</b>			
Crude Oil ((USD/Bbl)	77.532	0.04%	6.82%
Brent (USD/Bbl)	79.879	-0.05%	2.03%
Natural Gas (USD/MMBtu)	3.875	-2.34%	57.98%
<b>Metals</b>			
Gold (USD/t.oz)	2,671.99	-0.13%	31.70%
Silver (USD/t.oz)	29.821	-0.07%	32.81%
Copper(USD/Lbs)	4.303	-0.18%	14.91%

## Volume Shocker



## Currency Pair

	Last Close	Change in %
USD/INR	86.697	-0.06
GBP/INR	105.625	0.39
EUR/INR	89.000	0.58
JPY/INR	0.5476	-0.52



## Market View from the Technical & Derivatives Research Desk

### Nifty



The 50-stock index NIFTY climbed 90 points or 0.4% to 23,176 on Tuesday as easing inflation to a four-month low boosted trader sentiment and raised hopes of an RBI rate cut. From a technical perspective, NIFTY 50 traded within a tight range and formed a doji candlestick pattern with a large upper wick on the daily chart, signaling a lack of upward momentum. A decisive breakout beyond the inside bar candle will determine the near-term trend. Moving forward, resistance is expected at 23260/23400 levels, while support is placed at 23130/23050-23000 levels. A breach below 23000 could trigger further downside towards 22850/22700 levels. Keep an eye on US inflation data, Crude Oil price movements, Q3FY25 earnings and ongoing geopolitical tensions which could influence domestic market trends.

### Bank Nifty



The BANKNIFTY index closed above the crucial level of 48700 with the formation of a bullish candle on the daily chart. Technically, the index is currently hovering around its major demand zone of 48500-49000 levels, where fresh buying could emerge. However, a decisive break down below this range might extend the decline towards 48250/47740 levels. On the upside, BANKNIFTY is likely to face resistance at 49000/49250 levels. Traders are advised to trade with strict stop losses as volatility may remain high ahead of Q3FY25 results and multiple macroeconomic data releases scheduled in this week.

### Intraday Stock Picks

Symbol	Buy/Sell	Target	Stoploss
HINDUNILVR	Sell below 2365	2315	2400
JUBLPHARMA	Buy above 963	1000	940
TATASTEEL Future	Buy above 128	134	124

### Bulk Deals

Company	Acquirer	Qty	Price	Seller	Qty	Price
CGFL	SUPRIYA KATARIA	3,00,000	33.00	BSEL INFRASTRUCTURE REALTY LIMITED	3,00,000	33.00
SHANGAR	SAJM GLOBAL IMPEX PRIVATE LIMITED	52,00,002	5.79	UMA SHANKAR EXIM PRIVATE LIMITED	45,42,470	5.79
MODIS	SETU SECURITIES PVT LTD	1,50,400	244.00	MANSI SHARE & STOCK ADVISORS PRIVATE LIMITED	1,50,400	244.00



## Trade ideas - Pivot Point Indicators

Scrip Name	Close	R2	R1	PP	S1	S2	Scrip Name	Close	R2	R1	PP	S1	S2
ACC	1947	2036	1972	1921	1870	1807	CIPLA	1445	1468	1455	1444	1433	1420
AUBANK	578	599	586	575	564	550	COALINDIA	370	384	376	369	362	354
ADANIPTS	1123	1188	1145	1110	1075	1032	COLPAL	2708	2884	2800	2733	2665	2582
ADANIPOWER	540	624	563	513	464	403	CONCOR	763	802	774	752	730	702
ABCAPITAL	175	182	177	174	170	166	COROMANDEL	1831	1883	1851	1826	1800	1768
ABFRL	270	281	274	268	263	256	CROMPTON	358	368	362	356	350	344
AJANTPHARM	2827	2907	2849	2802	2755	2696	CUMMINSIND	2944	3028	2970	2922	2875	2816
ALKEM	5253	5362	5303	5256	5209	5150	DLF	726	741	730	721	712	700
AMBUJACEM	516	541	524	509	495	477	DABUR	515	530	522	515	509	500
APOLLOHOSP	6716	7064	6899	6766	6633	6468	DALBHARAT	1715	1784	1745	1714	1682	1643
APOLLOTYRE	453	466	458	452	445	437	DIVISLAB	5990	6271	6074	5915	5756	5560
ASHOKLEY	211	220	213	208	203	197	DRREDDY	1337	1371	1352	1337	1321	1302
ASIANPAINT	2240	2323	2285	2254	2224	2186	EDELWEISS	111	116	113	110	108	104
AUROPHARMA	1175	1210	1188	1171	1154	1132	EICHERMOT	5033	5134	5065	5008	4952	4882
DMART	3488	3623	3549	3490	3431	3357	EMAMILTD	558	595	576	561	546	527
AXISBANK	1056	1075	1064	1054	1044	1033	ENDURANCE	2027	2120	2065	2021	1976	1922
BAJAJ-AUTO	8618	8853	8721	8614	8507	8375	ENGINERSIN	169	179	173	168	163	157
BAJFINANCE	7342	7579	7429	7307	7185	7035	ESCORTS	3442	3625	3500	3399	3298	3173
BAJAJFINSV	1727	1777	1742	1714	1685	1650	EXIDEIND	384	402	389	378	368	355
BAJAJHLDNG	10688	11129	10822	10573	10325	10018	FEDERALBNK	194	200	196	192	189	184
BALKRISIND	2722	2841	2755	2685	2615	2529	FORTIS	662	692	676	664	651	636
BANDHANBNK	149	160	152	146	139	131	IRFC	136	144	138	134	130	125
BANKBARODA	225	235	228	223	218	211	FSL	370	391	377	365	353	339
BANKINDIA	95	100	97	94	91	87	GAIL	176	183	179	176	173	169
BATAINDIA	1348	1414	1380	1352	1325	1290	GODREJPROP	2318	2390	2337	2294	2252	2199
BERGEPAIN	464	479	468	460	452	441	GICRE	421	441	429	419	408	396
BEL	271	281	274	268	262	254	GLENMARK	1518	1574	1538	1509	1480	1444
BHARATFORG	1196	1235	1210	1190	1169	1144	GODREJAGRO	718	742	727	715	702	687
BHEL	198	207	201	196	192	186	GODREJCP	1146	1195	1168	1147	1125	1099
BPCL	271	277	273	270	266	262	GODREJIND	955	984	969	957	944	929
BHARTIARTL	1594	1678	1636	1602	1568	1526	GODREJPROP	2318	2390	2337	2294	2252	2199
INSECTICID	609	629	615	604	592	578	GRAPHITE	499	518	509	501	494	485
BIOCON	387	412	396	383	370	354	GRASIM	2311	2362	2334	2312	2290	2262
BBTC	1984	2032	2001	1976	1951	1920	GSPL	349	365	354	345	336	324
BOSCHLTD	31555	32458	31885	31422	30959	30386	HEG	430	444	435	427	420	411
BRITANNIA	4870	5028	4952	4890	4828	4752	HCLTECH	1820	2047	1940	1852	1765	1657
CESC	154	162	158	154	151	146	HDFCAMC	3899	4071	3969	3887	3804	3702
CAMS	4249	4546	4401	4283	4164	4019	HDFCBANK	1651	1675	1660	1648	1636	1621
CANBK	94	99	95	92	89	86	HDFCLIFE	601	620	609	601	593	583
CASTROLIND	183	190	186	182	179	175	HAVELLS	1530	1597	1561	1531	1501	1465
CHOLAFIN	1277	1330	1291	1260	1229	1191	HEROMOTOCO	4107	4205	4147	4100	4052	3994
CUB	168	174	170	166	163	159	HEG	430	444	435	427	420	411

PP – Pivot Point, R1 – Resistance1, S1 – Support, R2 – Resistance2, S2 – Support2: How to trade Pivot points: If the stock opens above PP then go Long and Keep S1 as the stop loss for a possible target of R1/R2. If the stock opens below PP then go short and Keep R1 as the stop loss for a possible target of S1/S2.



Scrip Name	Close	R2	R1	PP	S1	S2	Scrip Name	Close	R2	R1	PP	S1	S2
HINDUNILVR	2369	2544	2465	2400	2336	2257	NBCC	85	90	86	83	80	76
HINDZINC	437	456	443	433	422	409	NHPC	76	81	78	75	73	69
HUDCO	215	225	218	212	206	199	NMDC	64	67	65	62	60	57
ICICIBANK	1243	1262	1249	1238	1228	1214	NTPC	312	326	316	308	301	291
ICICIGI	1840	1919	1877	1844	1810	1768	NATIONALUM	200	208	202	197	193	187
ICICIPRULI	642	656	647	640	632	624	NESTLEIND	2225	2306	2262	2227	2192	2148
IDBI	79	93	83	75	67	57	NAM-INDIA	637	676	657	641	626	607
IDFCFIRSTB	62	65	63	61	60	58	OBEROIRLTY	1982	2100	2039	1989	1940	1878
ITC	437	446	442	438	435	430	ONGC	261	267	263	260	257	253
INDHOTEL	783	818	793	773	753	728	OIL	465	483	471	462	452	440
INFIBEAM	23	24	23	23	22	21	OFSS	10700	11348	11025	10764	10502	10179
INDIANB	506	540	517	499	480	457	PIIND	3465	3593	3521	3462	3403	3330
INDHOTEL	783	818	793	773	753	728	PNBHOUSING	844	889	861	838	816	788
IOC	127	132	128	126	123	119	PAGEIND	46508	47322	46798	46375	45952	45429
IGL	412	426	418	411	405	397	PETRONET	325	337	329	322	316	307
INDUSINDBK	964	1010	984	963	942	916	PFIZER	5099	5432	5251	5104	4957	4775
NAUKRI	7459	7790	7593	7433	7273	7076	PIDILITIND	2813	2852	2827	2806	2786	2760
INFY	1938	2003	1972	1947	1922	1891	PEL	1028	1104	1050	1007	963	909
INDIGO	4016	4102	4044	3997	3951	3893	PFC	419	446	427	411	395	375
IPCALAB	1584	1622	1602	1586	1570	1551	POWERGRID	292	299	294	291	287	282
JSWENERGY	551	585	562	544	526	503	PRESTIGE	1431	1483	1455	1432	1409	1381
JSWSTEEL	904	939	917	899	882	860	PGHH	14668	14917	14754	14623	14491	14328
JINDALSTEL	909	964	930	903	877	843	PNB	99	103	100	98	96	93
JUBLFOOD	712	730	719	711	702	692	QUESS	625	656	636	619	603	582
JKCEMENT	4398	4508	4443	4390	4337	4272	RBLBANK	156	163	158	154	150	145
KOTAKBANK	1760	1807	1777	1753	1728	1698	RECLTD	479	510	488	469	451	428
LT	3465	3528	3495	3469	3442	3409	RAJESHXPO	214	226	218	212	206	198
LTTS	4717	5072	4905	4769	4634	4467	RELIANCE	1239	1276	1256	1240	1224	1204
LICHSGFIN	554	573	559	549	538	524	SBILIFE	1492	1537	1510	1488	1467	1440
LTIM	5768	6286	6042	5845	5648	5404	SRF	2512	2590	2549	2516	2484	2443
LUPIN	2158	2217	2184	2158	2132	2099	SHREECEM	25301	25753	25424	25157	24891	24562
MRF	114500	116781	115216	113951	112685	111121	SHRIRAMFIN	547	578	556	538	519	497
MGL	1270	1329	1300	1275	1251	1221	SIEMENS	5882	6031	5931	5850	5769	5669
M&MFIN	267	276	270	266	262	257	SBIN	751	780	762	747	732	714
M&M	3052	3152	3092	3043	2995	2934	SAIL	106	111	108	105	101	98
MANAPPURAM	181	192	184	178	172	164	SJVN	95	99	96	94	91	88
MRPL	137	142	139	136	133	130	SUNPHARMA	1775	1825	1793	1767	1741	1709
MARICO	663	683	672	663	653	642	SUNTV	658	681	666	655	643	629
MARUTI	11745	12039	11844	11687	11530	11335	SYNGENE	830	849	837	827	817	805
MFSL	1055	1102	1078	1058	1038	1014	TVSMOTOR	2235	2344	2279	2226	2173	2107
LICI	827	849	833	821	808	792	TCS	4241	4389	4317	4258	4199	4127
MOTHERSON	145	154	148	144	140	135	TATACOMM	1678	1772	1717	1673	1629	1575
MPHASIS	2780	2862	2813	2773	2733	2683	TATASTEEL	127	132	129	126	123	119
NATCOPHARM	1259	1305	1274	1250	1225	1195	TATAMOTORS	772	806	785	768	751	730

PP – Pivot Point, R1 – Resistance1, S1 – Support, R2 – Resistance2, S2 – Support2: How to trade Pivot points: If the stock opens above PP then go Long and Keep S1 as the stop loss for a possible target of R1/R2. If the stock opens below PP then go short and Keep R1 as the stop loss for a possible target of S1/S2.



Scrip Name	Close	R2	R1	PP	S1	S2	Scrip Name	Close	R2	R1	PP	S1	S2
TATAPOWER	358	376	363	352	342	329	VGUARD	393	414	402	393	383	371
TATASTEEL	127	132	129	126	123	119	VARROC	570	600	585	573	560	545
TECHM	1647	1714	1677	1646	1616	1578	VBL	570	601	583	569	555	537
NIACL	193	217	201	188	175	159	VEDL	432	455	439	426	413	397
RAMCOCEM	885	928	902	881	859	833	IDEA	8	9	8	8	8	7
TITAN	3335	3522	3432	3358	3284	3194	VOLTAS	1642	1719	1668	1626	1585	1534
UPL	543	555	546	539	532	523	WHIRLPOOL	1705	1854	1752	1670	1587	1485
ULTRACEMCO	10500	10940	10732	10565	10398	10190	WIPRO	293	302	296	291	286	280
UNIONBANK	104	108	106	104	102	99	YESBANK	18	19	18	18	17	16
FLUOROCHEM	3654	3847	3751	3673	3595	3499	ZEEL	124	131	126	123	120	116
UBL	1984	2040	1999	1966	1933	1891	ZYDUSLIFE	1002	1027	1009	994	979	961
Index Name	Close	R2	R1	PP	S1	S2	Index Name	Close	R2	R1	PP	S1	S2
NIFTY 50	23176	23372	23273	23192	23111	23011	NIFTY FMCG	55627	57428	56599	55929	55259	54430
NIFTY MIDCAP 50	14970	15335	15093	14898	14702	14461	NIFTY IT	43061	44836	44003	43328	42654	41821
NIFTY AUTO	22833	23447	23050	22728	22407	22010	NIFTY METAL	8268	8599	8365	8176	7987	7754
NIFTY BANK	48729	49724	49134	48657	48180	47590	NIFTY PHARMA	22204	22591	22331	22121	21911	21652
NIFTY ENERGY	33568	34538	33879	33345	32812	32153	NIFTY PSU BANK	6145	6414	6229	6080	5930	5745
NIFTY FINANCIAL SE	22722	23099	22867	22679	22491	22259	NIFTY REALTY	908	933	919	908	897	884

PP – Pivot Point, R1 – Resistance1, S1 – Support, R2 – Resistance2, S2 – Support2: How to trade Pivot points: If the stock opens above PP then go Long and Keep S1 as the stop loss for a possible target of R1/R2. If the stock opens below PP then go short and Keep R1 as the stop loss for a possible target of S1/S2.

**Research Desk**

Jebaris Nadar	Research Associate	jebarisn@way2wealth.com
---------------	--------------------	-------------------------

**Disclaimer**

Analyst Certification: I, Jebaris Nadar, research analyst and author of this report, hereby certify that the views expressed in this research report accurately reflect our personal views about the subject securities, issuers, products, sectors or industries. It is also certified that no part of the compensation of the analyst(s) was, is, or will be directly or indirectly related to the inclusion of specific recommendations or views in this research. The analyst(s), principally responsible for the preparation of this research report, receives compensation based on overall revenues of the company (Way2Wealth Brokers Private Limited, hereinafter referred to as Way2Wealth) and has taken reasonable care to achieve and maintain independence and objectivity in making any recommendations.

It is confirmed that the author of this report has not received any compensation from the companies mentioned in the report in the preceding 12 months. Our research professionals are paid in part based on the profitability of Way2Wealth, which include earnings from other business. Neither Way2Wealth nor its directors, employees, agents or representatives shall be liable for any damages whether direct or indirect, incidental, special or consequential including lost revenue or lost profits that may arise from or in connection with the use of the information contained in this report.

This report is for the personal information of the authorized recipient and does not construe to be any investment, legal or taxation advice to you. Way2Wealth is not soliciting any action based upon it. Nothing in this research shall be construed as a solicitation to buy or sell any security or product, or to engage in or refrain from engaging in any such transaction. The contents of this material are general and are neither comprehensive nor appropriate for every individual and are solely for the informational purposes of the readers. This material does not take into account the specific objectives, financial situation or needs of an individual/s or a Corporate/s or any entity/s.

This research has been prepared for the general use of the clients of the Way2Wealth and must not be copied, either in whole or in part, or distributed or redistributed to any other person in any form. If you are not the intended recipient you must not use or disclose the information in this research in any way. Though disseminated to all the customers simultaneously, not all customers may receive this report at the same time. Way2Wealth will not treat recipients as customers by virtue of their receiving this report. The distribution of this document in other jurisdictions may be restricted by the law applicable in the relevant jurisdictions and persons into whose possession this document comes should inform themselves about, and observe any such restrictions.

The report is based upon information obtained from sources believed to be reliable, but we do not make any representation or warranty that it is accurate, complete or up to date and it should not be relied upon as such. Way2Wealth or any of its affiliates or employees makes no warranties, either express or implied of any kind regarding any matter pertaining to this report, including, but not limited to warranties of suitability, fitness for a particular purpose, accuracy, timeliness, completeness or non-infringement. We accept no obligation to correct or update the information or opinions in it. Way2Wealth or any of its affiliates or employees shall not be in any way responsible for any loss or damage that may arise to any person from any inadvertent error in the information contained in this report. The recipients of this report should rely on their own investigations. In no event shall Way2Wealth be liable for any damages of any kind, including, but not limited to, indirect, special, incidental, consequential, punitive, lost profits, or lost opportunity, whether or not Way2Wealth has advised of the possibility of such damages.

This material contains statements that are forward-looking; such statements are based upon the current beliefs and expectations and are subject to significant risks and uncertainties. Actual results may differ from those set forth in the forward-looking statements. These uncertainties include but are not limited to: the risk of adverse movements or volatility in the securities markets or in interest or foreign exchange rates or indices; adverse impact from an economic slowdown; downturn in domestic or foreign securities and trading conditions or markets; increased competition; unfavourable political and diplomatic developments; change in the governmental or regulatory policies; failure of a corporate event and such others. This is not an offer to buy or sell or a solicitation of an offer to buy or sell any security or instrument or to participate in any particular trading strategy. No part of this material may be copied or duplicated in any form by any means or redistributed without the written consent of Way2Wealth. In no event shall any reader publish, retransmit, redistribute or otherwise reproduce any information provided by Way2Wealth in any format to anyone. Way2Wealth and its affiliates, officers, directors and employees including persons involved in the preparation or issuance of this report may from time to time have interest in securities / positions, financial or otherwise in the securities related to the information contained in this report.

Investment in securities market are subject to market risks. Read all the related documents carefully before investing.

Registration granted by SEBI, membership of BASL (in case of IAs) and certification from NISM in no way guarantee performance of the intermediary or provide any assurance of returns to investors.

**Way2Wealth Brokers Pvt. Ltd. (CIN U67120KA2000PTC027628) SEBI Rgn. No. : INH200008705.**

Registered Office: Rukmini Towers, 3<sup>rd</sup> & 4<sup>th</sup> Floor, # 3/1, Platform Road, Sheshadripuram, Bangalore - 560 020,

Website: [www.way2wealth.com](http://www.way2wealth.com) Email: [research@way2wealth.com](mailto:research@way2wealth.com)

**Way2wealthResearch is also available on Bloomberg WTWL<GO>**