



Market Overview

Indian benchmark indices Sensex and Nifty 50 closed with marginal gains on Wednesday supported by positive global cues and sustained buying by domestic institutional investors. The heavyweight index NSE Nifty 50 climbed 37.15 points or 0.16 percent to settle at 23,213.20 while the BSE Sensex advanced 224.45 points to close at 76,724.08 with 19 constituents among the 30-share index ending in green. Realty and IT stocks outperformed the sectoral indices while Healthcare stocks witnessed selling pressure in the yesterday's trading session. Among individual stocks, Trent Ltd and NTPC Ltd were the top performers, rising 3.72% and 3.53%, respectively. In contrast, Mahindra & Mahindra Ltd was the biggest laggard, falling 2.93%. In terms of institutional participation, Foreign Institutional Investors (FIIs) continued to show bearish sentiment, offloading equities worth Rs 4,533.49 crore. Meanwhile, Domestic Institutional Investors (DIIs) maintained their bullish stance, purchasing shares worth Rs 3,682.54 crore.

Key Economic Events for the Week

Date	Country	Economic event
13-01-2025	CN	Balance of Trade
13-01-2025	IN	Inflation Rate MoM & YoY
14-01-2025	JP	Current Account
14-01-2025	IN	WPI Inflation YoY
14-01-2025	US	PPI MoM
15-01-2025	GB	Inflation Rate MoM & YoY
15-01-2025	GB	Core Inflation Rate MoM & YoY
15-01-2025	US	Inflation Rate MoM & YoY
15-01-2025	US	Core Inflation Rate MoM & YoY
15-01-2025	US	Change in Crude Oil Inventories
15-01-2025	IN	Balance of Trade
16-01-2025	GB	GDP MoM & YoY
16-01-2025	US	Retail Sales MoM
17-01-2025	CN	GDP Growth Rate YoY
17-01-2025	CN	Industrial Production YoY
17-01-2025	GB	Retail Sales MoM & YoY

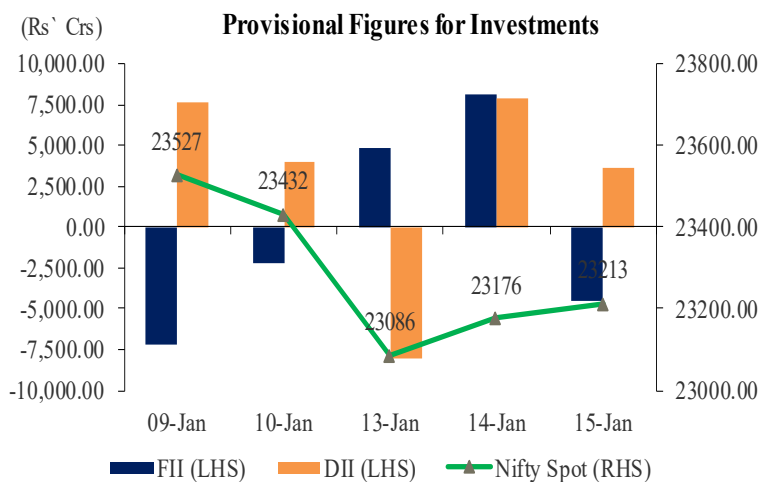
Asian Indices

Live Markets	As on 08.00 hours IST			
	Shanghai	Nikkei	Gift Nifty	Hang Seng
Current Quote	3,252.79	38,551.96	23,399.50	19,548.90
% Change	0.80%	0.28%	0.59%	1.36%

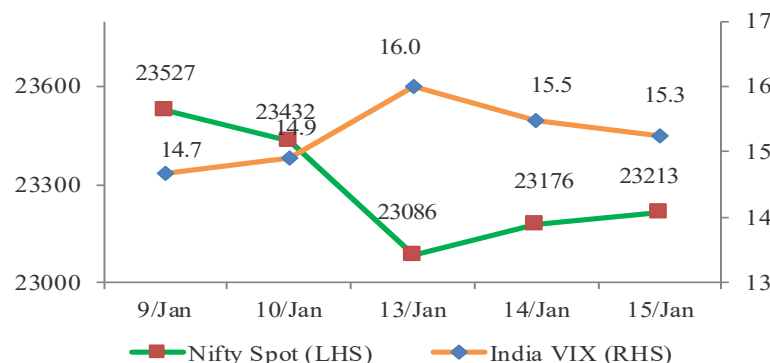
Sectoral Indices

Index	Last Close	% Change	P/E	Dividend Yield (%)
Sensex	76,500	0.2	22.41	1.17
Nifty	23,213	0.4	21.37	1.30
Nifty Midcap 50	15,038	0.5	47.07	0.82
Nifty Auto	22,713	-0.5	22.17	0.99
Nifty Bank	48,752	0.1	13.11	1.02
Nifty Energy	33,821	0.8	15.44	2.31
Nifty Fin. Services	22,680	-0.2	15.73	0.94
Nifty FMCG	55,550	-0.1	45.34	1.86
Nifty IT	43,401	0.8	33.79	1.90
Nifty Metal	8,281	0.2	19.79	2.49
Nifty PSU Bank	6,151	0.1	7.00	2.40
Nifty Realty	921	1.4	47.62	0.41
Nifty Pharma	21,973	-1.0	34.76	0.61

NIFTY Vs. Institutional Activity



NIFTY vs India VIX



NSE Volume Movement

Particulars	14-Jan-25	15-Jan-25	% Change
Traded Value (Rs. In Crores)	103215	92453	-10.43%
Traded Quantity (in Lakhs)	36262	40782	12.47%
Number of Trades	40913379	36940589	-9.71%
Total Market Cap. (Rs. In Crores)	42032868	42152967	0.00%

**Business News**

The company **Adani Green Energy Ltd** posted a 37 percent year-on-year increase in operational capacity, reaching 11,609 MW. It also expanded its footprint with greenfield additions of 2,693 MW in solar and 438 MW in wind power plants across Gujarat and Rajasthan, underscoring its growing influence in the renewable energy space.

The company **L&T Technology Services** reported a 4.1 percent dip in Q3 net profit, which stood at Rs 322.4 crore. However, the company's revenue grew by 9.5 percent year-on-year, reaching Rs 2,653 crore. EBITDA stood at Rs 422 crore, reflecting the pressures of narrowing profit margins in a competitive market.

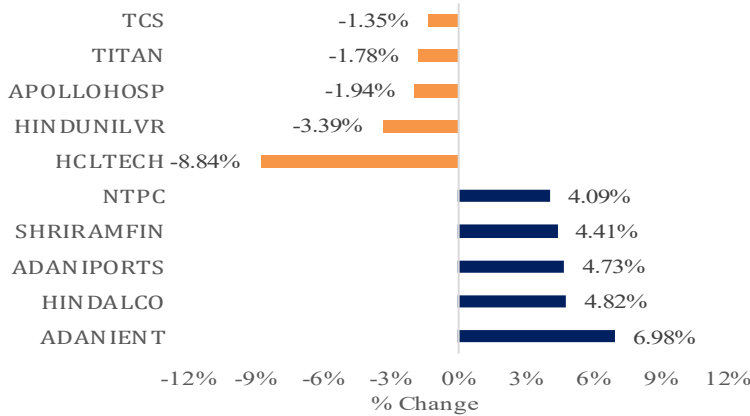
The company **RVNL** has received a letter of acceptance for an order worth Rs 3,622 crore from Bharat Sanchar Nigam Limited (BSNL) for the development of the Middle Mile network of BharatNet under the Design, Build, Operate, and Maintain (DBOM) model.

The company **Azad Engineering** has signed a long-term supply agreement with GE Vernova International LLC, USA, for the supply of highly engineered, complex rotating and stationary airfoils for advanced gas turbine engines to meet the global demand in the power generation industry. This current phase of the contract is valued at \$112 million (approximately Rs 960 crore).

The lender **Punjab & Sind Bank** reported a substantial 146.72 percent YoY jump in net profit, reaching Rs 282 crore for Q3. The bank's Net Interest Income (NII) rose 27 percent to Rs 938.7 crore, a strong indicator of its improving financial health and growing market presence.



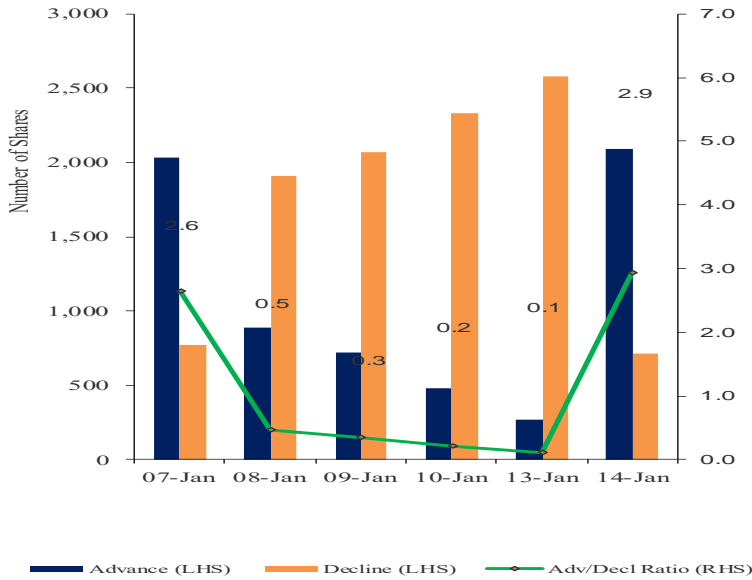
Top Gainers/Losers



Global Indices

Index	Last Close	Change in %
DJIA	43,222	1.65%
S&P 500	5,950	1.83%
NASDAQ	19,511	2.45%
FTSE100	8,301	1.21%
CAC	7,475	0.69%
DAX	20,575	1.50%
KOSPI	2,528	1.23%

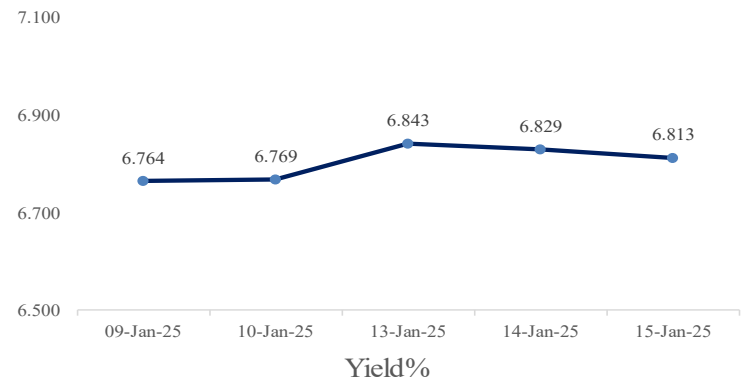
Advance – Decline



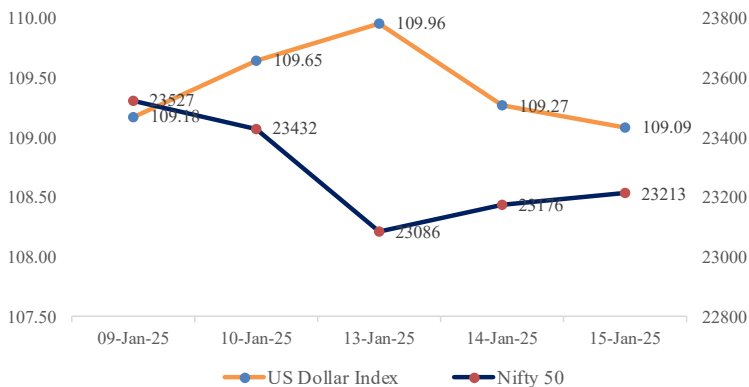
Indian ADR

(Converted to INR)	Prem / (Disc) in (%)		
	Close	NSE Close	1 Day
Infosys	22.89	1949.65	0.005
Icici Bank	28.68	1238.25	-0.002
Drreddy	15.32	1337.20	0.000
Hdfc Bank	59.16	1643.05	-0.002
Wipro	3.51	292.65	-0.001

10 Years GOI Bond Yield (%)



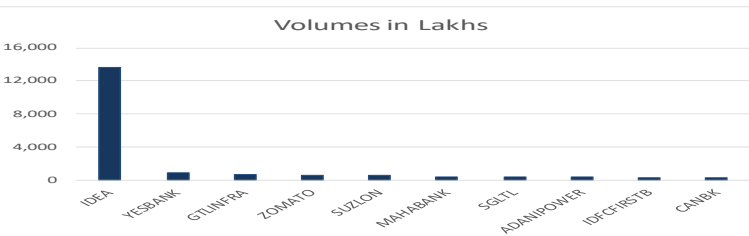
NIFTY vs Dollar Index



Commodities

	Last Close	% Change	YoY (%)
Energy			
Crude Oil ((USD/Bbl)	80.292	0.31%	10.81%
Brent (USD/Bbl)	82.259	0.28%	5.62%
Natural Gas (USD/MMBtu)	4.066	-0.42%	64.27%
Metals			
Gold (USD/t.oz)	2,696.03	0.05%	31.70%
Silver (USD/t.oz)	30.620	-0.13%	32.81%
Copper(USD/Lbs)	4.380	0.48%	14.91%

Volume Shocker



Currency Pair

	Last Close	Change in %
USD/INR	86.505	-0.22
GBP/INR	105.737	0.11
EUR/INR	89.160	0.18
JPY/INR	0.5552	1.38



Market View from the Technical & Derivatives Research Desk

Nifty



The flagship index NIFTY 50 rose 0.2% to close at 23,213.20 on Wednesday as traders remained cautious ahead of U.S. inflation data and the earnings season. On the technical front, the index remained in consolidation for the second consecutive session and formed a doji candlestick pattern on the daily chart. The index is likely to move towards the 23350–23450 range, where next leg of selling pressure may emerge as part of its consolidation phase. On the downside, support is placed at 23150/23040-23000 levels. A breach below 23000 could trigger further downside towards 22850/22700 levels. Traders are advised to maintain tight stop losses, as the index is trading in a critical zone that could witness heightened volatility

Bank Nifty



On Wednesday, the banking index BANKNIFTY witnessed a tug-of-war between buyers and sellers and formed a doji candlestick pattern on the daily chart. Technically, the index is currently hovering around its crucial demand zone of 48500-49000 levels and a decisive breakout beyond this range would dictate the near term trend. On the upside, BANKNIFTY is likely to face resistance at 49000/49250 levels while support for the banking index is observed at 48500/48200 levels. Keep an eye on Q3FY25 earnings, Crude Oil price movements and ongoing geopolitical tensions which could influence domestic market trends.

Intraday Stock Picks

Symbol	Buy/Sell	Target	Stoploss
CROMPTON	Buy above 365	380	356
HAVELLS	Buy above 1540	1590	1510
POLICYBZR Future	Buy above 1765	1840	1720

Bulk Deals

Company	Acquirer	Qty	Price	Seller	Qty	Price
SHANGAR	SHARE INDIA SECURITIES LIMITED	5,00,000	5.90	UMA SHANKAR EXIM PRIVATE LIMITED	5,50,000	5.90
HITECHWIND	KARTIKBATHLA	48,000	9.96	ALUMALAIGUNASEKARAN	31,754	9.96
UMIYA	PREETI BHAUKA	1,40,000	26.72	STOCKFLAIR	70,000	26.72



Trade ideas - Pivot Point Indicators

Scrip Name	Close	R2	R1	PP	S1	S2	Scrip Name	Close	R2	R1	PP	S1	S2
ACC	1969	2007	1983	1964	1945	1921	CIPLA	1448	1479	1460	1444	1429	1410
AUBANK	588	602	592	583	575	565	COALINDIA	374	392	382	375	367	358
ADANIPTS	1128	1162	1144	1130	1115	1097	COLPAL	2668	2801	2729	2671	2614	2542
ADANIPOWER	547	615	578	547	517	480	CONCOR	758	773	765	758	750	742
ABCAPITAL	174	178	176	174	172	169	COROMANDEL	1824	1891	1855	1826	1797	1761
ABFRL	266	286	276	268	261	251	CROMPTON	365	378	369	362	355	346
AJANTPHARM	2875	3019	2937	2871	2804	2722	CUMMINSIND	2876	3066	2971	2894	2816	2721
ALKEM	5200	5435	5313	5215	5117	4995	DLF	734	763	746	732	718	701
AMBUJACEM	519	536	526	519	511	502	DABUR	515	523	518	514	510	505
APOLLOHOSP	6728	6909	6793	6699	6605	6489	DALBHARAT	1731	1771	1748	1729	1710	1686
APOLLOTYRE	455	465	460	456	451	446	DIVISLAB	5830	6187	6010	5866	5723	5546
ASHOKLEY	207	218	213	208	203	197	DRREDDY	1334	1374	1350	1331	1312	1288
ASIANPAINT	2230	2281	2255	2235	2214	2188	EDELWEISS	112	117	114	112	110	107
AUROPHARMA	1149	1206	1180	1158	1136	1109	EICHERMOT	5090	5186	5118	5062	5007	4939
DMART	3570	3683	3605	3542	3479	3400	EMAMILTD	566	591	576	563	551	536
AXISBANK	1025	1084	1054	1031	1007	978	ENDURANCE	2073	2182	2120	2070	2020	1958
BAJAJ-AUTO	8565	8970	8789	8642	8495	8313	ENGINERSIN	177	189	181	174	168	159
BAJFINANCE	7173	7548	7361	7209	7058	6871	ESCORTS	3472	3558	3509	3469	3430	3381
BAJAJFINSV	1675	1796	1735	1685	1635	1574	EXIDEIND	382	393	387	383	378	372
BAJAJHLDNG	10840	11315	11032	10803	10575	10292	FEDERALBNK	194	199	196	194	192	190
BALKRISIND	2688	2797	2745	2702	2660	2607	FORTIS	652	683	668	656	644	629
BANDHANBNK	148	154	151	149	147	144	IRFC	137	145	141	138	134	130
BANKBARODA	222	229	226	223	220	217	FSL	381	399	386	376	366	353
BANKINDIA	96	99	97	96	94	92	GAIL	178	184	181	178	175	172
BATAINDIA	1310	1383	1349	1322	1295	1261	GODREJPROP	2307	2431	2373	2327	2280	2223
BERGEPAIN	465	472	468	464	461	456	GICRE	415	440	428	419	409	397
BEL	268	277	272	269	265	261	GLENMARK	1478	1611	1544	1490	1437	1370
BHARATFORG	1187	1241	1212	1189	1165	1136	GODREJAGRO	732	765	745	729	713	692
BHEL	203	212	207	202	198	192	GODREJCP	1130	1156	1143	1133	1123	1110
BPCL	268	284	276	270	263	255	GODREJIND	957	1016	985	960	935	904
BHARTIARTL	1609	1634	1618	1605	1592	1576	GODREJPROP	2307	2431	2373	2327	2280	2223
INSECTICID	604	637	620	607	593	576	GRAPHITE	507	530	518	508	499	487
BIOCON	383	402	392	384	376	366	GRASIM	2318	2395	2354	2322	2289	2248
BBTC	1989	2047	2019	1995	1972	1944	GSPL	353	360	356	352	348	343
BOSCHLTD	31470	32168	31804	31509	31214	30850	HEG	427	465	448	433	419	401
BRITANNIA	4873	5055	4954	4871	4789	4687	HCLTECH	1826	1870	1846	1827	1808	1784
CESC	155	161	157	155	152	148	HDFCAMC	4037	4376	4167	3998	3828	3619
CAMS	4319	4504	4399	4314	4228	4123	HDFCBANK	1646	1685	1665	1648	1632	1612
CANBK	95	97	96	95	93	92	HDFCLIFE	594	622	607	594	582	566
CASTROLIND	182	189	186	183	179	176	HAVELLS	1534	1572	1547	1527	1507	1482
CHOLAFIN	1256	1321	1291	1266	1241	1211	HEROMOTOCO	4117	4221	4165	4119	4073	4017
CUB	169	173	170	168	166	163	HEG	427	465	448	433	419	401

PP – Pivot Point, R1 – Resistance1, S1 – Support, R2 – Resistance2, S2 – Support2: How to trade Pivot points: If the stock opens above PP then go Long and Keep S1 as the stop loss for a possible target of R1/R2. If the stock opens below PP then go short and Keep R1 as the stop loss for a possible target of S1/S2.



Scrip Name	Close	R2	R1	PP	S1	S2	Scrip Name	Close	R2	R1	PP	S1	S2
HINDUNILVR	2377	2419	2392	2371	2349	2323	NBCC	86	91	88	86	83	80
HINDZINC	441	459	450	442	434	425	NHPC	77	81	79	77	76	74
HUDCO	215	226	220	215	210	204	NMDC	63	67	65	64	62	61
ICICIBANK	1239	1258	1247	1238	1229	1218	NTPC	323	336	327	320	313	304
ICICIGI	1889	2015	1933	1866	1799	1717	NATIONALUM	195	207	201	196	191	185
ICICIPRULI	635	655	644	635	627	616	NESTLEIND	2210	2267	2230	2201	2171	2135
IDBI	73	78	76	73	71	68	NAM-INDIA	661	705	679	658	637	612
IDFCFIRSTB	62	64	63	62	62	61	OBEROIRLTY	2003	2100	2044	1998	1953	1897
ITC	437	447	442	438	434	429	ONGC	258	270	264	260	256	251
INDHOTEL	813	852	827	806	785	760	OIL	463	484	474	466	458	448
INFIBEAM	23	24	23	23	23	22	OFSS	10594	11153	10860	10623	10386	10093
INDIANB	503	521	512	505	498	489	PIIND	3453	3524	3488	3460	3431	3396
INDHOTEL	813	852	827	806	785	760	PNBHOUSING	853	890	867	849	831	809
IOC	127	131	129	127	126	124	PAGEIND	45766	48826	47311	46086	44861	43347
IGL	403	425	415	406	398	387	PETRONET	327	335	330	326	322	318
INDUSINDBK	963	1006	984	967	949	928	PFIZER	4950	5228	5102	5000	4898	4771
NAUKRI	7450	7711	7552	7423	7294	7135	PIDILITIND	2800	2874	2838	2810	2781	2745
INFY	1952	1978	1962	1949	1936	1920	PEL	1015	1055	1035	1020	1005	986
INDIGO	4068	4291	4170	4072	3974	3853	PFC	430	446	436	427	419	409
IPCALAB	1557	1624	1590	1564	1537	1503	POWERGRID	299	313	304	297	290	282
JSWENERGY	563	579	568	558	549	537	PRESTIGE	1435	1493	1459	1431	1404	1369
JSWSTEEL	907	923	914	907	900	892	PGHH	14595	14892	14735	14608	14481	14323
JINDALSTEL	908	938	922	908	895	879	PNB	98	102	100	99	97	95
JUBLFOOD	700	724	713	703	693	681	QUESS	638	660	646	635	623	609
JKCEMENT	4447	4616	4522	4447	4371	4278	RBLBANK	157	163	160	157	154	151
KOTAKBANK	1788	1829	1803	1781	1759	1733	RECLTD	478	501	490	481	472	461
LT	3506	3577	3535	3501	3467	3425	RAJESHXPO	211	219	215	212	209	205
LTTS	4870	5183	4981	4818	4655	4454	RELIANCE	1252	1271	1260	1250	1241	1229
LICHSGFIN	553	567	560	555	549	543	SBILIFE	1475	1532	1505	1483	1461	1434
LTIM	5830	6105	5941	5809	5676	5512	SRF	2497	2566	2531	2504	2476	2442
LUPIN	2132	2217	2172	2136	2099	2054	SHREECEM	25330	25697	25456	25261	25066	24825
MRF	114000	116316	115211	114318	113425	112320	SHRIRAMFIN	534	560	547	537	526	513
MGL	1294	1346	1317	1293	1269	1240	SIEMENS	5830	6013	5922	5848	5774	5683
M&MFIN	268	280	273	267	261	254	SBIN	755	767	760	755	749	742
M&M	2961	3148	3062	2992	2922	2836	SAIL	105	110	108	106	104	101
MANAPPURAM	180	190	184	179	174	168	SJVN	95	100	97	95	93	91
MRPL	137	149	143	139	135	130	SUNPHARMA	1759	1798	1777	1761	1744	1723
MARICO	661	679	668	659	650	639	SUNTV	653	675	664	655	646	635
MARUTI	11965	12464	12211	12006	11801	11548	SYNGENE	819	858	836	818	800	778
MFSL	1041	1086	1061	1040	1019	993	TVSMOTOR	2253	2297	2269	2247	2224	2196
LICI	835	857	843	831	818	804	TCS	4255	4307	4270	4240	4209	4172
MOTHERSON	149	154	151	148	146	143	TATACOMM	1680	1735	1707	1684	1662	1634
MPHASIS	2778	2855	2818	2788	2758	2721	TATASTEEL	127	130	128	127	125	123
NATCOPHARM	1225	1309	1269	1236	1203	1163	TATAMOTORS	763	808	786	768	750	728

PP – Pivot Point, R1 – Resistance1, S1 – Support, R2 – Resistance2, S2 – Support2: How to trade Pivot points: If the stock opens above PP then go Long and Keep S1 as the stop loss for a possible target of R1/R2. If the stock opens below PP then go short and Keep R1 as the stop loss for a possible target of S1/S2.



Scrip Name	Close	R2	R1	PP	S1	S2	Scrip Name	Close	R2	R1	PP	S1	S2
TATAPOWER	365	386	374	364	355	343	VGUARD	393	404	398	393	388	382
TATASTEEL	127	130	128	127	125	123	VARROC	577	619	597	579	562	540
TECHM	1675	1708	1686	1668	1650	1628	VBL	560	588	575	565	555	542
NIACL	188	208	198	190	182	172	VEDL	435	453	444	436	429	419
RAMCOCEM	879	910	895	882	870	855	IDEA	9	10	9	9	8	7
TITAN	3322	3395	3351	3315	3280	3236	VOLTAS	1625	1684	1652	1625	1599	1567
UPL	545	559	552	547	541	535	WHIRLPOOL	1670	1761	1719	1685	1651	1609
ULTRACEMCO	10544	10796	10661	10552	10442	10307	WIPRO	293	299	295	292	289	285
UNIONBANK	106	110	107	106	104	102	YESBANK	18	19	18	18	18	18
FLUOROCHEM	3728	3911	3799	3708	3618	3506	ZEEL	123	129	126	123	120	117
UBL	1941	2019	1983	1953	1924	1887	ZYDUSLIFE	985	1026	1007	991	976	956
Index Name	Close	R2	R1	PP	S1	S2	Index Name	Close	R2	R1	PP	S1	S2
NIFTY 50	23213	23421	23309	23218	23127	23014	NIFTY FMCG	55550	56411	55921	55524	55127	54637
NIFTY MIDCAP 50	15038	15392	15198	15041	14883	14689	NIFTY IT	43401	43927	43566	43275	42984	42624
NIFTY AUTO	22713	23430	23078	22793	22508	22156	NIFTY METAL	8281	8453	8363	8290	8218	8128
NIFTY BANK	48752	49562	49133	48786	48439	48010	NIFTY PHARMA	21973	22660	22313	22032	21751	21404
NIFTY ENERGY	33821	34517	34161	33873	33585	33229	NIFTY PSU BANK	6151	6275	6210	6157	6105	6040
NIFTY FINANCIAL SE	22680	23042	22847	22690	22532	22338	NIFTY REALTY	921	956	935	918	901	880

PP – Pivot Point, R1 – Resistance1, S1 – Support, R2 – Resistance2, S2 – Support2: How to trade Pivot points: If the stock opens above PP then go Long and Keep S1 as the stop loss for a possible target of R1/R2. If the stock opens below PP then go short and Keep R1 as the stop loss for a possible target of S1/S2.

**Research Desk**

Jebaris Nadar	Research Associate	jebarisn@way2wealth.com
---------------	--------------------	-------------------------

Disclaimer

Analyst Certification: I, Jebaris Nadar, research analyst and author of this report, hereby certify that the views expressed in this research report accurately reflect our personal views about the subject securities, issuers, products, sectors or industries. It is also certified that no part of the compensation of the analyst(s) was, is, or will be directly or indirectly related to the inclusion of specific recommendations or views in this research. The analyst(s), principally responsible for the preparation of this research report, receives compensation based on overall revenues of the company (Way2Wealth Brokers Private Limited, hereinafter referred to as Way2Wealth) and has taken reasonable care to achieve and maintain independence and objectivity in making any recommendations.

It is confirmed that the author of this report has not received any compensation from the companies mentioned in the report in the preceding 12 months. Our research professionals are paid in part based on the profitability of Way2Wealth, which include earnings from other business. Neither Way2Wealth nor its directors, employees, agents or representatives shall be liable for any damages whether direct or indirect, incidental, special or consequential including lost revenue or lost profits that may arise from or in connection with the use of the information contained in this report.

This report is for the personal information of the authorized recipient and does not construe to be any investment, legal or taxation advice to you. Way2Wealth is not soliciting any action based upon it. Nothing in this research shall be construed as a solicitation to buy or sell any security or product, or to engage in or refrain from engaging in any such transaction. The contents of this material are general and are neither comprehensive nor appropriate for every individual and are solely for the informational purposes of the readers. This material does not take into account the specific objectives, financial situation or needs of an individual/s or a Corporate/s or any entity/s.

This research has been prepared for the general use of the clients of the Way2Wealth and must not be copied, either in whole or in part, or distributed or redistributed to any other person in any form. If you are not the intended recipient you must not use or disclose the information in this research in any way. Though disseminated to all the customers simultaneously, not all customers may receive this report at the same time. Way2Wealth will not treat recipients as customers by virtue of their receiving this report. The distribution of this document in other jurisdictions may be restricted by the law applicable in the relevant jurisdictions and persons into whose possession this document comes should inform themselves about, and observe any such restrictions.

The report is based upon information obtained from sources believed to be reliable, but we do not make any representation or warranty that it is accurate, complete or up to date and it should not be relied upon as such. Way2Wealth or any of its affiliates or employees makes no warranties, either express or implied of any kind regarding any matter pertaining to this report, including, but not limited to warranties of suitability, fitness for a particular purpose, accuracy, timeliness, completeness or non-infringement. We accept no obligation to correct or update the information or opinions in it. Way2Wealth or any of its affiliates or employees shall not be in any way responsible for any loss or damage that may arise to any person from any inadvertent error in the information contained in this report. The recipients of this report should rely on their own investigations. In no event shall Way2Wealth be liable for any damages of any kind, including, but not limited to, indirect, special, incidental, consequential, punitive, lost profits, or lost opportunity, whether or not Way2Wealth has advised of the possibility of such damages.

This material contains statements that are forward-looking; such statements are based upon the current beliefs and expectations and are subject to significant risks and uncertainties. Actual results may differ from those set forth in the forward-looking statements. These uncertainties include but are not limited to: the risk of adverse movements or volatility in the securities markets or in interest or foreign exchange rates or indices; adverse impact from an economic slowdown; downturn in domestic or foreign securities and trading conditions or markets; increased competition; unfavourable political and diplomatic developments; change in the governmental or regulatory policies; failure of a corporate event and such others. This is not an offer to buy or sell or a solicitation of an offer to buy or sell any security or instrument or to participate in any particular trading strategy. No part of this material may be copied or duplicated in any form by any means or redistributed without the written consent of Way2Wealth. In no event shall any reader publish, retransmit, redistribute or otherwise reproduce any information provided by Way2Wealth in any format to anyone. Way2Wealth and its affiliates, officers, directors and employees including persons involved in the preparation or issuance of this report may from time to time have interest in securities / positions, financial or otherwise in the securities related to the information contained in this report.

Investment in securities market are subject to market risks. Read all the related documents carefully before investing.

Registration granted by SEBI, membership of BASL (in case of IAs) and certification from NISM in no way guarantee performance of the intermediary or provide any assurance of returns to investors.

Way2Wealth Brokers Pvt. Ltd. (CIN U67120KA2000PTC027628) SEBI Rgn. No. : INH200008705.

Registered Office: Rukmini Towers, 3rd & 4th Floor, # 3/1, Platform Road, Sheshadripuram, Bangalore - 560 020,

Website: www.way2wealth.com Email: research@way2wealth.com

Way2wealthResearch is also available on Bloomberg WTWL<GO>