



## Market Overview

Domestic equity benchmark indices, Sensex and Nifty 50, closed slightly lower on Tuesday after a choppy session as gains in IT stocks were outweighed by weakness in the Auto and Consumer Goods sectors. The broader index Nifty 50 swung between gains and falls to close with a marginal fall at 22,945.30 while BSE Sensex fell 29.47 points to settle at 75,967.39. Among individual stocks, NTPC Ltd and Tech Mahindra Ltd were the top performers, rising 2.93% and 2.41%, respectively. In contrast, IndusInd Bank was the biggest laggard, falling 2.30%. Small and Mid-cap stocks continue to lag due to apprehensions about premium valuations. The overall market breadth remained negative with 2979 stocks declining and 974 stocks advancing. On the institutional participation front, Foreign Institutional Investors (FIIs) and Domestic Institutional Investors (DIIs) both adopted a bullish stance, with FIIs purchasing shares worth Rs 4,786.56 crore and DIIs buying shares worth Rs 3,072.19 crore, respectively.

## Key Economic Events for the Week

| Date       | Country | Economic event                  |
|------------|---------|---------------------------------|
| 17-02-2025 | JP      | GDP Growth Rate QoQ Prel        |
| 17-02-2025 | IN      | Balance of Trade                |
| 18-02-2025 | GB      | Unemployment Rate               |
| 19-02-2025 | US      | Net Long-term TIC Flows         |
| 19-02-2025 | JP      | Balance of Trade                |
| 19-02-2025 | GB      | Inflation Rate MoM & YoY        |
| 19-02-2025 | US      | Building Permits Prel           |
| 19-02-2025 | US      | Housing Starts                  |
| 20-02-2025 | US      | FOMC Minutes                    |
| 20-02-2025 | US      | Change in Crude Oil Inventories |
| 21-02-2025 | JP      | Inflation Rate MoM & YoY        |
| 21-02-2025 | GB      | Gfk Consumer Confidence         |
| 21-02-2025 | IN      | HSBC Composite PMI Flash        |
| 21-02-2025 | IN      | HSBC Manufacturing PMI Flash    |
| 21-02-2025 | IN      | HSBC Services PMI Flash         |
| 21-02-2025 | GB      | Retail Sales MoM & YoY          |
| 21-02-2025 | US      | Existing Home Sales             |

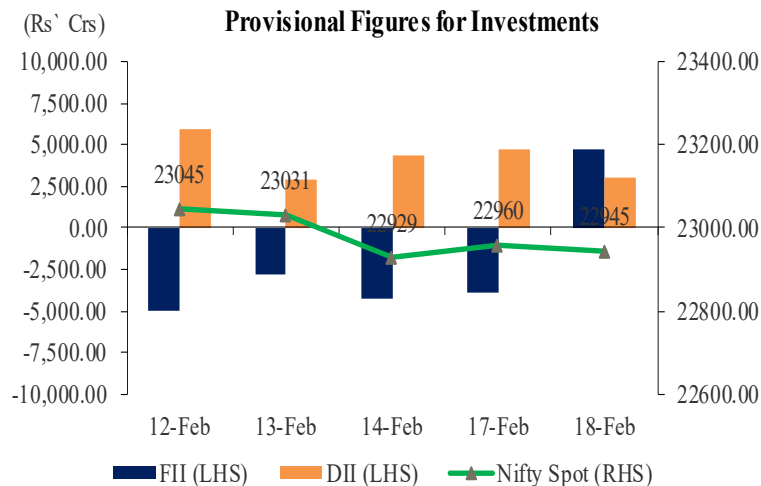
## Asian Indices

| Live Markets  | As on 08.00 hours IST |           |            |           |
|---------------|-----------------------|-----------|------------|-----------|
|               | Shanghai              | Nikkei    | Gift Nifty | Hang Seng |
| Current Quote | 3,336.89              | 39,098.58 | 22,954.50  | 22,852.46 |
| % Change      | 0.34%                 | -0.44%    | 0.06%      | -0.54%    |

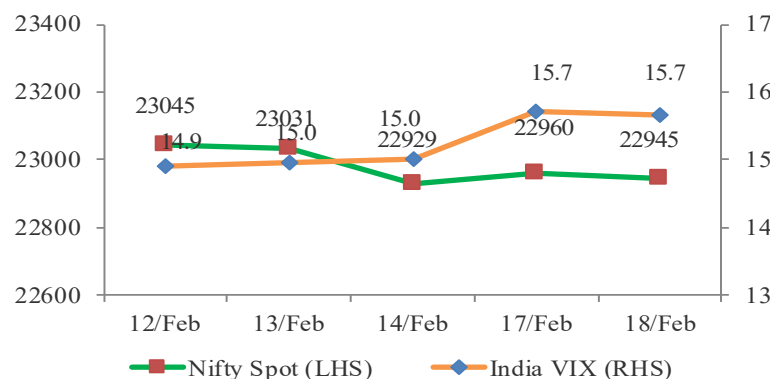
## Sectoral Indices

| Index               | Last Close | % Change | P/E   | Dividend Yield (%) |
|---------------------|------------|----------|-------|--------------------|
| Sensex              | 75,967     | 0.0      | 22.39 | 1.17               |
| Nifty               | 22,945     | -0.1     | 20.40 | 1.42               |
| Nifty Midcap 50     | 13,997     | 0.0      | 38.23 | 0.85               |
| Nifty Auto          | 21,819     | -0.6     | 20.97 | 1.17               |
| Nifty Bank          | 49,087     | -0.4     | 12.84 | 1.02               |
| Nifty Energy        | 30,849     | 0.4      | 14.22 | 2.79               |
| Nifty Fin. Services | 23,280     | 0.0      | 15.51 | 0.93               |
| Nifty FMCG          | 52,481     | -0.9     | 42.77 | 2.06               |
| Nifty IT            | 41,464     | 1.0      | 31.43 | 2.47               |
| Nifty Metal         | 8,256      | 0.1      | 19.04 | 2.57               |
| Nifty PSU Bank      | 5,873      | -0.5     | 6.22  | 2.51               |
| Nifty Realty        | 832        | 0.1      | 40.23 | 0.45               |
| Nifty Pharma        | 20,969     | -0.5     | 31.69 | 0.67               |

## NIFTY Vs. Institutional Activity



## NIFTY vs India VIX

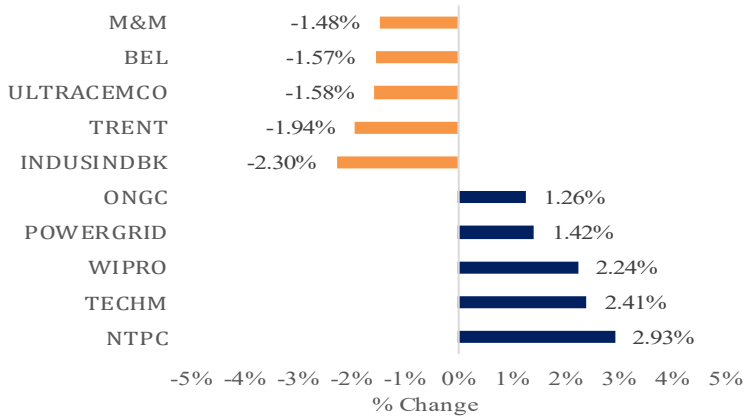


## NSE Volume Movement

| Particulars                       | 17-Feb-25 | 18-Feb-25 | % Change |
|-----------------------------------|-----------|-----------|----------|
| Traded Value (Rs. In Crores)      | 82681     | 84876     | 2.65%    |
| Traded Quantity (in Lakhs)        | 31707     | 27830     | -12.23%  |
| Number of Trades                  | 45382650  | 37474472  | -17.43%  |
| Total Market Cap. (Rs. In Crores) | 39788153  | 39606431  | 0.00%    |



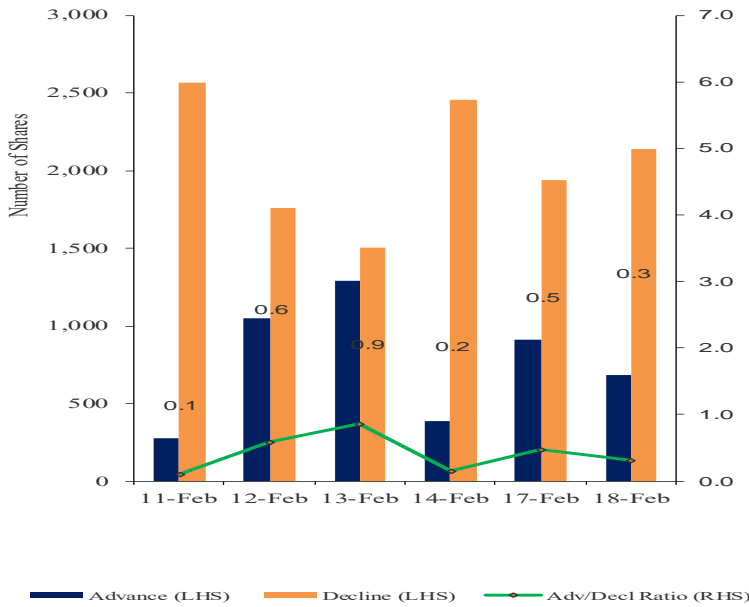
## Top Gainers/Losers



## Global Indices

| Index   | Last Close | Change in % |
|---------|------------|-------------|
| DJIA    | 44,556     | 0.02%       |
| S&P 500 | 6,130      | 0.24%       |
| NASDAQ  | 20,041     | 0.07%       |
| FTSE100 | 8,767      | -0.01%      |
| CAC     | 8,207      | 0.21%       |
| DAX     | 22,845     | 0.20%       |
| KOSPI   | 2,675      | 1.83%       |

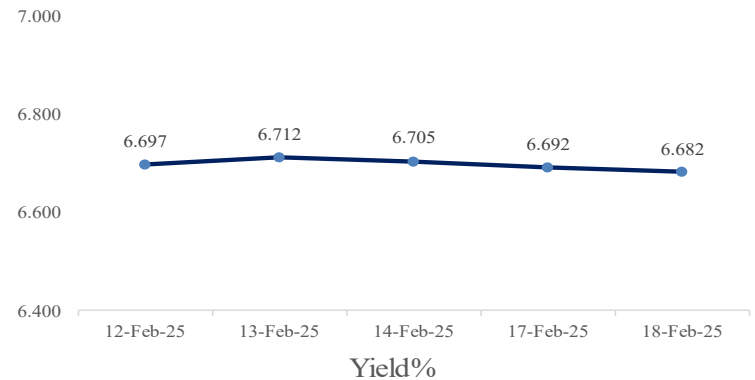
## Advance – Decline



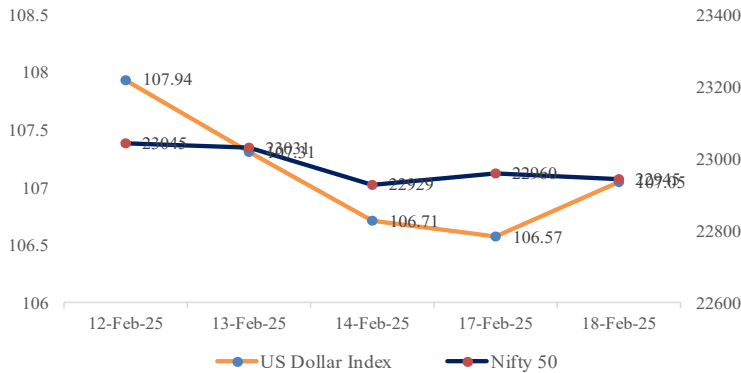
## Indian ADR

|            | Prem / (Disc) in (%) |           |        |
|------------|----------------------|-----------|--------|
|            | Close                | NSE Close | 1 Day  |
| Infosys    | 21.41                | 1851.95   | 0.005  |
| Icici Bank | 28.27                | 1243.05   | -0.006 |
| Drreddy    | 13.67                | 1197.40   | -0.001 |
| Hdfc Bank  | 60.51                | 1723.05   | 0.003  |
| Wipro      | 3.66                 | 312.20    | 0.022  |

## 10 Years GOI Bond Yield (%)



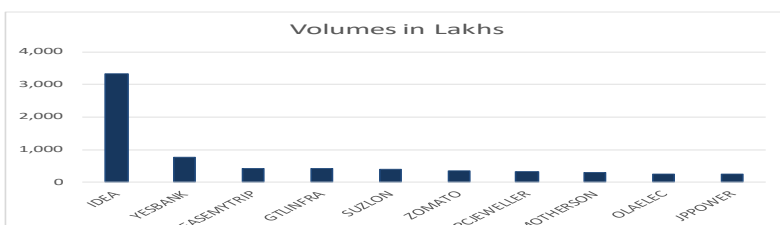
## NIFTY vs Dollar Index



## Commodities

|                         | Last Close | % Change | YoY (%) |
|-------------------------|------------|----------|---------|
| <b>Energy</b>           |            |          |         |
| Crude Oil ((USD/Bbl)    | 72.042     | 0.29%    | -5.98%  |
| Brent (USD/Bbl)         | 76.003     | 0.25%    | -6.02%  |
| Natural Gas (USD/MMBtu) | 3.967      | -1.17%   | 125.28% |
| <b>Metals</b>           |            |          |         |
| Gold (USD/t.oz)         | 2,936.16   | 0.08%    | 41.11%  |
| Silver (USD/t.oz)       | 32.759     | -0.41%   | 42.93%  |
| Copper(USD/Lbs)         | 4.572      | -0.34%   | 21.12%  |

## Volume Shocker



## Currency Pair

|         | Last Close | Change in % |
|---------|------------|-------------|
| USD/INR | 86.950     | 0.08        |
| GBP/INR | 109.532    | 0.25        |
| EUR/INR | 91.225     | 0.24        |
| JPY/INR | 0.5758     | 0.66        |



## Market View from the Technical & Derivatives Research Desk

### Nifty



The 50-stock index NIFTY closed nearly flat at 22,945.30 on Tuesday as gains in IT and energy were offset by losses in FMCG and auto, amid weak Q3 earnings, foreign outflows, and global uncertainties. From a technical perspective, NIFTY 50 remained in a sideways trend for the past four sessions, closing within the same range and concluded yesterday's session with a doji candle formation on the daily chart. The index is currently now approaching a crucial hourly supply zone at 23000–23130, where the next wave of selling pressure may emerge. If the NIFTY 50 sustains above this range, it could advance toward 23300/23500 levels in the near term. On the downside, support is seen at 22800/22720 levels, with a breakdown below 22720 potentially dragging the index toward 22650/22500 levels.

### Bank Nifty



The BANKNIFTY index declined 171.60 points or 0.35% to settle at 49087.30 on Tuesday. Technically, the index formed a bearish candlestick pattern with a lower shadow on the daily charts, indicating buying interest at lower levels. However, it remained within the lower band of the Bollinger Bands and below all key moving averages, maintaining its lower high-lower low structure, which signals continued weakness. On the upside, resistance for BANKNIFTY is positioned at at 49500/49680 levels, with a breakout above 49680 potentially pushing the index towards 49830/50000 levels. Meanwhile, support is observed at 49000/48750 levels.

### Intraday Stock Picks

| Symbol           | Buy/Sell       | Target | Stoploss |
|------------------|----------------|--------|----------|
| INOXWIND         | Sell below 163 | 157    | 167      |
| FINPIPE          | Sell below 181 | 174    | 185      |
| BERGEPAIN Future | Buy above 493  | 505    | 485      |

### Bulk Deals

| Company | Acquirer                                 | Qty       | Price  | Seller                          | Qty       | Price  |
|---------|--|-----------|--------|---------------------------------|-----------|--------|
| ASHIS   | MAGNUM HEALTH AND SAFETY PRIVATE LIMITED | 95,000    | 30.75  | RAKESH RAMESHCHANDRA BHAGAT     | 95,000    | 30.75  |
| OSIAJEE | MANISH KUMAR                             | 75,500    | 100.58 | URJA INVESTMENT PRIVATE LIMITED | 76,000    | 100.58 |
| WINPRO  | DILKUSH BAFNA J                          | 11,00,000 | 2.75   | GAJANAND JASHWANTBHAI TAILOR    | 13,85,472 | 2.75   |



## Trade ideas - Pivot Point Indicators

| Scrip Name | Close | R2    | R1    | PP    | S1    | S2    | Scrip Name | Close | R2   | R1   | PP   | S1   | S2   |
|------------|-------|-------|-------|-------|-------|-------|------------|-------|------|------|------|------|------|
| ACC        | 1874  | 1982  | 1918  | 1866  | 1815  | 1751  | CIPLA      | 1482  | 1502 | 1488 | 1477 | 1466 | 1453 |
| AUBANK     | 504   | 545   | 525   | 509   | 493   | 474   | COALINDIA  | 360   | 371  | 364  | 359  | 353  | 347  |
| ADANIPTS   | 1084  | 1114  | 1094  | 1078  | 1062  | 1042  | COLPAL     | 2448  | 2536 | 2486 | 2445 | 2405 | 2354 |
| ADANIPOWER | 483   | 504   | 494   | 486   | 478   | 468   | CONCOR     | 678   | 727  | 704  | 685  | 666  | 643  |
| ABCAPITAL  | 154   | 160   | 156   | 153   | 150   | 146   | COROMANDEL | 1708  | 1790 | 1739 | 1697 | 1656 | 1605 |
| ABFRL      | 250   | 270   | 260   | 252   | 243   | 233   | CROMPTON   | 331   | 340  | 335  | 331  | 326  | 321  |
| AJANTPHARM | 2747  | 3009  | 2841  | 2706  | 2570  | 2403  | CUMMINSIND | 2710  | 2773 | 2734 | 2703 | 2672 | 2633 |
| ALKEM      | 4712  | 4880  | 4803  | 4741  | 4679  | 4603  | DLF        | 671   | 689  | 678  | 669  | 660  | 649  |
| AMBUJACEM  | 485   | 511   | 496   | 484   | 472   | 458   | DABUR      | 515   | 525  | 521  | 517  | 513  | 508  |
| APOLLOHOSP | 6358  | 6453  | 6399  | 6356  | 6313  | 6259  | DALBHARAT  | 1800  | 1850 | 1818 | 1792 | 1766 | 1734 |
| APOLLOTYRE | 411   | 428   | 419   | 412   | 405   | 396   | DIVISLAB   | 5840  | 6128 | 5986 | 5871 | 5756 | 5614 |
| ASHOKLEY   | 222   | 229   | 225   | 221   | 217   | 213   | DRREDDY    | 1198  | 1227 | 1209 | 1195 | 1181 | 1163 |
| ASIANPAINT | 2233  | 2280  | 2255  | 2234  | 2214  | 2189  | EDELWEISS  | 95    | 103  | 99   | 96   | 93   | 88   |
| AUROPHARMA | 1164  | 1202  | 1178  | 1158  | 1138  | 1113  | EICHERMOT  | 4726  | 4849 | 4782 | 4728 | 4673 | 4606 |
| DMART      | 3670  | 3799  | 3722  | 3661  | 3599  | 3523  | EMAMILTD   | 533   | 583  | 557  | 535  | 514  | 487  |
| AXISBANK   | 995   | 1008  | 1000  | 993   | 986   | 978   | ENDURANCE  | 1810  | 1867 | 1836 | 1811 | 1786 | 1755 |
| BAJAJ-AUTO | 8446  | 8683  | 8561  | 8462  | 8363  | 8242  | ENGINERSIN | 157   | 164  | 159  | 156  | 153  | 148  |
| BAJFINANCE | 8450  | 8595  | 8504  | 8430  | 8357  | 8265  | ESCORTS    | 2999  | 3064 | 3018 | 2981 | 2944 | 2898 |
| BAJAJFINSV | 1889  | 1940  | 1915  | 1895  | 1874  | 1849  | EXIDEIND   | 358   | 372  | 364  | 358  | 352  | 345  |
| BAJAJHLDNG | 12020 | 12584 | 12282 | 12038 | 11794 | 11492 | FEDERALBNK | 181   | 186  | 183  | 181  | 178  | 175  |
| BALKRISIND | 2644  | 2775  | 2707  | 2652  | 2597  | 2529  | FORTIS     | 601   | 635  | 620  | 607  | 594  | 578  |
| BANDHANBNK | 130   | 138   | 134   | 131   | 127   | 123   | IRFC       | 119   | 126  | 122  | 120  | 117  | 114  |
| BANKBARODA | 206   | 211   | 208   | 205   | 203   | 200   | FSL        | 349   | 364  | 354  | 347  | 339  | 329  |
| BANKINDIA  | 96    | 103   | 100   | 97    | 94    | 91    | GAIL       | 164   | 172  | 166  | 162  | 158  | 152  |
| BATAINDIA  | 1281  | 1323  | 1299  | 1280  | 1261  | 1237  | GODREJPROP | 1977  | 2042 | 2003 | 1972 | 1940 | 1901 |
| BERGEPAIN  | 493   | 509   | 498   | 488   | 479   | 467   | GICRE      | 382   | 416  | 392  | 373  | 353  | 329  |
| BEL        | 244   | 257   | 250   | 245   | 239   | 232   | GLENMARK   | 1373  | 1415 | 1393 | 1376 | 1358 | 1337 |
| BHARATFORG | 1075  | 1114  | 1089  | 1070  | 1050  | 1026  | GODREJAGRO | 688   | 726  | 708  | 693  | 678  | 660  |
| BHEL       | 186   | 203   | 195   | 188   | 181   | 173   | GODREJCP   | 1017  | 1076 | 1046 | 1022 | 999  | 969  |
| BPCL       | 252   | 260   | 255   | 251   | 247   | 242   | GODREJIND  | 840   | 876  | 853  | 835  | 817  | 794  |
| BHARTIARTL | 1670  | 1729  | 1699  | 1674  | 1649  | 1618  | GODREJPROP | 1977  | 2042 | 2003 | 1972 | 1940 | 1901 |
| INSECTICID | 570   | 604   | 588   | 576   | 563   | 547   | GRAPHITE   | 389   | 417  | 403  | 392  | 381  | 368  |
| BIOCON     | 337   | 364   | 351   | 341   | 330   | 317   | GRASIM     | 2445  | 2544 | 2490 | 2447 | 2404 | 2350 |
| BBTC       | 1850  | 1984  | 1913  | 1856  | 1799  | 1728  | GSPL       | 284   | 293  | 287  | 283  | 278  | 273  |
| BOSCHLTD   | 27025 | 27873 | 27379 | 26979 | 26579 | 26085 | HEG        | 343   | 359  | 350  | 342  | 334  | 325  |
| BRITANNIA  | 4880  | 5051  | 4969  | 4902  | 4836  | 4753  | HCLTECH    | 1725  | 1756 | 1735 | 1718 | 1701 | 1681 |
| CESC       | 127   | 133   | 130   | 126   | 123   | 119   | HDFCAMC    | 3731  | 3822 | 3768 | 3724 | 3680 | 3626 |
| CAMS       | 3265  | 3495  | 3389  | 3303  | 3217  | 3110  | HDFCBANK   | 1723  | 1755 | 1736 | 1720 | 1705 | 1685 |
| CANBK      | 84    | 88    | 86    | 85    | 83    | 81    | HDFCLIFE   | 619   | 639  | 628  | 619  | 610  | 598  |
| CASTROLIND | 207   | 213   | 210   | 207   | 204   | 201   | HAVELLS    | 1505  | 1568 | 1537 | 1511 | 1486 | 1454 |
| CHOLAFIN   | 1350  | 1389  | 1367  | 1348  | 1330  | 1308  | HEROMOTOCO | 3845  | 3962 | 3900 | 3849 | 3798 | 3736 |
| CUB        | 158   | 165   | 161   | 158   | 155   | 151   | HEG        | 343   | 359  | 350  | 342  | 334  | 325  |

PP – Pivot Point, R1 – Resistance1, S1 – Support, R2 – Resistance2, S2 – Support2: How to trade Pivot points: If the stock opens above PP then go Long and Keep S1 as the stop loss for a possible target of R1/R2. If the stock opens below PP then go short and Keep R1 as the stop loss for a possible target of S1/S2.



| Scrip Name | Close  | R2     | R1     | PP     | S1     | S2     | Scrip Name | Close | R2    | R1    | PP    | S1    | S2    |
|------------|--------|--------|--------|--------|--------|--------|------------|-------|-------|-------|-------|-------|-------|
| HINDUNILVR | 2298   | 2378   | 2339   | 2308   | 2277   | 2238   | NBCC       | 77    | 87    | 82    | 79    | 76    | 72    |
| HINDZINC   | 409    | 431    | 420    | 411    | 402    | 391    | NHPC       | 73    | 76    | 74    | 72    | 71    | 69    |
| HUDCO      | 179    | 191    | 185    | 179    | 174    | 168    | NMDC       | 63    | 66    | 64    | 62    | 61    | 59    |
| ICICIBANK  | 1243   | 1274   | 1258   | 1246   | 1233   | 1217   | NTPC       | 312   | 328   | 317   | 307   | 298   | 287   |
| ICICIGI    | 1737   | 1788   | 1757   | 1732   | 1707   | 1676   | NATIONALUM | 179   | 188   | 183   | 179   | 175   | 170   |
| ICICIPRULI | 571    | 588    | 579    | 572    | 564    | 555    | NESTLEIND  | 2216  | 2256  | 2233  | 2215  | 2197  | 2174  |
| IDBI       | 71     | 74     | 73     | 71     | 70     | 69     | NAM-INDIA  | 513   | 538   | 525   | 514   | 502   | 489   |
| IDFCFIRSTB | 59     | 63     | 62     | 60     | 58     | 57     | OBEROIRLTY | 1583  | 1637  | 1605  | 1579  | 1553  | 1521  |
| ITC        | 405    | 416    | 411    | 407    | 402    | 397    | ONGC       | 236   | 245   | 239   | 234   | 230   | 224   |
| INDHOTEL   | 718    | 743    | 728    | 716    | 704    | 690    | OIL        | 397   | 422   | 407   | 396   | 384   | 370   |
| INFIBEAM   | 19     | 20     | 20     | 19     | 18     | 17     | OFSS       | 8695  | 9098  | 8898  | 8737  | 8575  | 8376  |
| INDIANB    | 517    | 535    | 523    | 514    | 505    | 493    | PIIND      | 3154  | 3256  | 3194  | 3144  | 3093  | 3031  |
| INDHOTEL   | 718    | 743    | 728    | 716    | 704    | 690    | PNBHOUSING | 803   | 838   | 812   | 792   | 772   | 747   |
| IOC        | 119    | 122    | 120    | 118    | 116    | 114    | PAGEIND    | 40475 | 41960 | 41178 | 40545 | 39911 | 39129 |
| IGL        | 192    | 200    | 195    | 191    | 186    | 181    | PETRONET   | 288   | 300   | 292   | 285   | 278   | 270   |
| INDUSINDBK | 1022   | 1073   | 1050   | 1032   | 1013   | 990    | PFIZER     | 4122  | 4229  | 4166  | 4115  | 4064  | 4001  |
| NAUKRI     | 7560   | 7826   | 7644   | 7497   | 7350   | 7168   | PIDILITIND | 2770  | 2842  | 2807  | 2778  | 2749  | 2713  |
| INFY       | 1848   | 1882   | 1864   | 1849   | 1834   | 1816   | PEL        | 913   | 961   | 937   | 918   | 898   | 874   |
| INDIGO     | 4330   | 4451   | 4375   | 4313   | 4251   | 4175   | PFC        | 374   | 392   | 380   | 371   | 361   | 349   |
| IPCALAB    | 1471   | 1509   | 1486   | 1468   | 1449   | 1427   | POWERGRID  | 266   | 275   | 269   | 265   | 260   | 254   |
| JSWENERGY  | 439    | 466    | 448    | 434    | 419    | 402    | PRESTIGE   | 1225  | 1301  | 1260  | 1227  | 1194  | 1153  |
| JSWSTEEL   | 976    | 999    | 985    | 973    | 962    | 948    | PGHH       | 13973 | 14419 | 14127 | 13892 | 13656 | 13364 |
| JINDALSTEL | 845    | 874    | 855    | 840    | 825    | 806    | PNB        | 92    | 95    | 93    | 92    | 91    | 89    |
| JUBLFOOD   | 691    | 719    | 701    | 686    | 671    | 653    | QUESS      | 597   | 618   | 605   | 594   | 583   | 570   |
| JKCEMENT   | 4495   | 4803   | 4665   | 4552   | 4440   | 4302   | RBLBANK    | 150   | 163   | 157   | 152   | 148   | 142   |
| KOTAKBANK  | 1962   | 1993   | 1972   | 1956   | 1939   | 1919   | RECLTD     | 384   | 408   | 395   | 384   | 374   | 361   |
| LT         | 3220   | 3295   | 3251   | 3215   | 3179   | 3135   | RAJESHXPO  | 159   | 170   | 165   | 160   | 156   | 150   |
| LTTS       | 4930   | 5096   | 4985   | 4895   | 4805   | 4693   | RELIANCE   | 1224  | 1242  | 1232  | 1223  | 1215  | 1204  |
| LICHSGFIN  | 529    | 552    | 541    | 531    | 522    | 510    | SBILIFE    | 1475  | 1507  | 1487  | 1470  | 1454  | 1433  |
| LTIM       | 5657   | 5895   | 5735   | 5606   | 5477   | 5317   | SRF        | 2745  | 2799  | 2770  | 2746  | 2722  | 2692  |
| LUPIN      | 2013   | 2052   | 2029   | 2011   | 1993   | 1970   | SHREECEM   | 28286 | 28855 | 28519 | 28247 | 27975 | 27639 |
| MRF        | 108863 | 110984 | 109991 | 109188 | 108384 | 107391 | SHRIRAMFIN | 552   | 570   | 558   | 548   | 539   | 527   |
| MGL        | 1297   | 1343   | 1314   | 1291   | 1267   | 1239   | SIEMENS    | 4810  | 5090  | 4948  | 4834  | 4719  | 4577  |
| M&MFIN     | 272    | 283    | 277    | 272    | 267    | 261    | SBIN       | 726   | 739   | 730   | 724   | 717   | 709   |
| M&M        | 2781   | 2917   | 2849   | 2794   | 2739   | 2671   | SAIL       | 104   | 109   | 106   | 104   | 102   | 99    |
| MANAPPURAM | 189    | 199    | 195    | 191    | 187    | 182    | SJVN       | 89    | 93    | 91    | 89    | 87    | 84    |
| MRPL       | 110    | 117    | 113    | 110    | 107    | 103    | SUNPHARMA  | 1700  | 1753  | 1729  | 1709  | 1690  | 1666  |
| MARICO     | 625    | 636    | 629    | 624    | 619    | 613    | SUNTV      | 579   | 600   | 590   | 581   | 573   | 563   |
| MARUTI     | 12778  | 13006  | 12892  | 12799  | 12707  | 12592  | SYNGENE    | 699   | 725   | 711   | 700   | 690   | 676   |
| MFSL       | 1057   | 1084   | 1069   | 1057   | 1044   | 1029   | TVSMOTOR   | 2346  | 2400  | 2373  | 2352  | 2330  | 2304  |
| LICI       | 758    | 786    | 773    | 762    | 752    | 739    | TCS        | 3873  | 3970  | 3924  | 3887  | 3850  | 3805  |
| MOTHERSON  | 128    | 134    | 130    | 127    | 123    | 119    | TATACOMM   | 1480  | 1544  | 1512  | 1486  | 1460  | 1428  |
| MPHASIS    | 2575   | 2691   | 2626   | 2573   | 2521   | 2455   | TATASTEEL  | 134   | 138   | 136   | 134   | 132   | 129   |
| NATCOPHARM | 835    | 933    | 886    | 847    | 809    | 761    | TATAMOTORS | 683   | 703   | 691   | 681   | 671   | 659   |

PP – Pivot Point, R1 – Resistance1, S1 – Support, R2 – Resistance2, S2 – Support2: How to trade Pivot points: If the stock opens above PP then go Long and Keep S1 as the stop loss for a possible target of R1/R2. If the stock opens below PP then go short and Keep R1 as the stop loss for a possible target of S1/S2.



| Scrip Name         | Close | R2    | R1    | PP    | S1    | S2    | Scrip Name     | Close | R2    | R1    | PP    | S1    | S2    |
|--------------------|-------|-------|-------|-------|-------|-------|----------------|-------|-------|-------|-------|-------|-------|
| TATAPOWER          | 339   | 352   | 343   | 336   | 330   | 321   | VGUARD         | 339   | 358   | 346   | 336   | 326   | 314   |
| TATASTEEL          | 134   | 138   | 136   | 134   | 132   | 129   | VARROC         | 437   | 490   | 466   | 446   | 427   | 403   |
| TECHM              | 1701  | 1753  | 1719  | 1691  | 1664  | 1629  | VBL            | 468   | 496   | 483   | 472   | 462   | 448   |
| NIACL              | 153   | 161   | 156   | 152   | 148   | 143   | VEDL           | 417   | 435   | 423   | 414   | 405   | 393   |
| RAMCOCEM           | 847   | 880   | 863   | 849   | 835   | 817   | IDEA           | 8     | 9     | 8     | 8     | 8     | 8     |
| TITAN              | 3219  | 3290  | 3250  | 3218  | 3186  | 3147  | VOLTAS         | 1223  | 1283  | 1251  | 1224  | 1197  | 1164  |
| UPL                | 629   | 642   | 635   | 630   | 624   | 617   | WHIRLPOOL      | 980   | 1046  | 1012  | 985   | 958   | 925   |
| ULTRACEMCO         | 11283 | 11621 | 11461 | 11332 | 11202 | 11042 | WIPRO          | 312   | 320   | 314   | 310   | 305   | 300   |
| UNIONBANK          | 109   | 113   | 111   | 109   | 107   | 104   | YESBANK        | 17    | 18    | 18    | 17    | 17    | 17    |
| FLUOROCHEM         | 3668  | 3868  | 3752  | 3659  | 3565  | 3449  | ZEEL           | 98    | 103   | 100   | 98    | 96    | 93    |
| UBL                | 2020  | 2074  | 2049  | 2029  | 2009  | 1984  | ZYDUSLIFE      | 915   | 949   | 931   | 916   | 902   | 884   |
|                    |       |       |       |       |       |       |                |       |       |       |       |       |       |
| Index Name         | Close | R2    | R1    | PP    | S1    | S2    | Index Name     | Close | R2    | R1    | PP    | S1    | S2    |
| NIFTY 50           | 22945 | 23177 | 23031 | 22913 | 22795 | 22649 | NIFTY FMCG     | 52481 | 53651 | 53101 | 52656 | 52211 | 51661 |
| NIFTY MIDCAP 50    | 13997 | 14244 | 14084 | 13954 | 13825 | 13665 | NIFTY IT       | 41464 | 42023 | 41648 | 41345 | 41041 | 40666 |
| NIFTY AUTO         | 21819 | 22314 | 22040 | 21818 | 21597 | 21323 | NIFTY METAL    | 8256  | 8437  | 8316  | 8218  | 8120  | 7999  |
| NIFTY BANK         | 49087 | 49787 | 49394 | 49077 | 48760 | 48367 | NIFTY PHARMA   | 20969 | 21406 | 21172 | 20982 | 20793 | 20559 |
| NIFTY ENERGY       | 30849 | 31527 | 31062 | 30686 | 30310 | 29845 | NIFTY PSU BANK | 5873  | 6011  | 5929  | 5862  | 5796  | 5713  |
| NIFTY FINANCIAL SE | 23280 | 23530 | 23363 | 23228 | 23093 | 22926 | NIFTY REALTY   | 832   | 850   | 839   | 829   | 820   | 808   |

PP – Pivot Point, R1 – Resistance1, S1 – Support, R2 – Resistance2, S2 – Support2: How to trade Pivot points: If the stock opens above PP then go Long and Keep S1 as the stop loss for a possible target of R1/R2. If the stock opens below PP then go short and Keep R1 as the stop loss for a possible target of S1/S2.

**Research Desk**

|               |                    |                         |
|---------------|--------------------|-------------------------|
| Jebaris Nadar | Research Associate | jebarisn@way2wealth.com |
|---------------|--------------------|-------------------------|

**Disclaimer**

Analyst Certification: I, Jebaris Nadar, research analyst and author of this report, hereby certify that the views expressed in this research report accurately reflect our personal views about the subject securities, issuers, products, sectors or industries. It is also certified that no part of the compensation of the analyst(s) was, is, or will be directly or indirectly related to the inclusion of specific recommendations or views in this research. The analyst(s), principally responsible for the preparation of this research report, receives compensation based on overall revenues of the company (Way2Wealth Brokers Private Limited, hereinafter referred to as Way2Wealth) and has taken reasonable care to achieve and maintain independence and objectivity in making any recommendations.

It is confirmed that the author of this report has not received any compensation from the companies mentioned in the report in the preceding 12 months. Our research professionals are paid in part based on the profitability of Way2Wealth, which include earnings from other business. Neither Way2Wealth nor its directors, employees, agents or representatives shall be liable for any damages whether direct or indirect, incidental, special or consequential including lost revenue or lost profits that may arise from or in connection with the use of the information contained in this report.

This report is for the personal information of the authorized recipient and does not construe to be any investment, legal or taxation advice to you. Way2Wealth is not soliciting any action based upon it. Nothing in this research shall be construed as a solicitation to buy or sell any security or product, or to engage in or refrain from engaging in any such transaction. The contents of this material are general and are neither comprehensive nor appropriate for every individual and are solely for the informational purposes of the readers. This material does not take into account the specific objectives, financial situation or needs of an individual/s or a Corporate/s or any entity/s.

This research has been prepared for the general use of the clients of the Way2Wealth and must not be copied, either in whole or in part, or distributed or redistributed to any other person in any form. If you are not the intended recipient you must not use or disclose the information in this research in any way. Though disseminated to all the customers simultaneously, not all customers may receive this report at the same time. Way2Wealth will not treat recipients as customers by virtue of their receiving this report. The distribution of this document in other jurisdictions may be restricted by the law applicable in the relevant jurisdictions and persons into whose possession this document comes should inform themselves about, and observe any such restrictions.

The report is based upon information obtained from sources believed to be reliable, but we do not make any representation or warranty that it is accurate, complete or up to date and it should not be relied upon as such. Way2Wealth or any of its affiliates or employees makes no warranties, either express or implied of any kind regarding any matter pertaining to this report, including, but not limited to warranties of suitability, fitness for a particular purpose, accuracy, timeliness, completeness or non-infringement. We accept no obligation to correct or update the information or opinions in it. Way2Wealth or any of its affiliates or employees shall not be in any way responsible for any loss or damage that may arise to any person from any inadvertent error in the information contained in this report. The recipients of this report should rely on their own investigations. In no event shall Way2Wealth be liable for any damages of any kind, including, but not limited to, indirect, special, incidental, consequential, punitive, lost profits, or lost opportunity, whether or not Way2Wealth has advised of the possibility of such damages.

This material contains statements that are forward-looking; such statements are based upon the current beliefs and expectations and are subject to significant risks and uncertainties. Actual results may differ from those set forth in the forward-looking statements. These uncertainties include but are not limited to: the risk of adverse movements or volatility in the securities markets or in interest or foreign exchange rates or indices; adverse impact from an economic slowdown; downturn in domestic or foreign securities and trading conditions or markets; increased competition; unfavourable political and diplomatic developments; change in the governmental or regulatory policies; failure of a corporate event and such others. This is not an offer to buy or sell or a solicitation of an offer to buy or sell any security or instrument or to participate in any particular trading strategy. No part of this material may be copied or duplicated in any form by any means or redistributed without the written consent of Way2Wealth. In no event shall any reader publish, retransmit, redistribute or otherwise reproduce any information provided by Way2Wealth in any format to anyone. Way2Wealth and its affiliates, officers, directors and employees including persons involved in the preparation or issuance of this report may from time to time have interest in securities / positions, financial or otherwise in the securities related to the information contained in this report.

Investment in securities market are subject to market risks. Read all the related documents carefully before investing.

Registration granted by SEBI, membership of BASL (in case of IAs) and certification from NISM in no way guarantee performance of the intermediary or provide any assurance of returns to investors.

**Way2Wealth Brokers Pvt. Ltd. (CIN U67120KA2000PTC027628) SEBI Rgn. No. : INH200008705.**

Registered Office: Rukmini Towers, 3<sup>rd</sup> & 4<sup>th</sup> Floor, # 3/1, Platform Road, Sheshadripuram, Bangalore - 560 020,

Website: [www.way2wealth.com](http://www.way2wealth.com) Email: [research@way2wealth.com](mailto:research@way2wealth.com)

**Way2wealthResearch is also available on Bloomberg WTWL<GO>**