



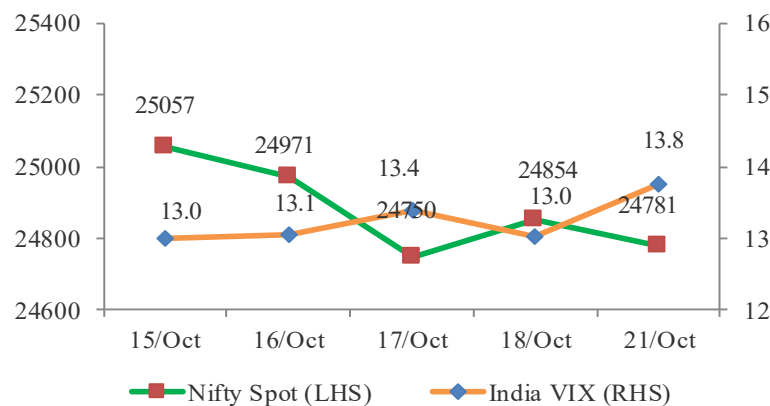
Market Overview

Indian benchmark indices Nifty 50 and Sensex failed to sustain early gains and settled lower on Monday amid mixed sentiments in global markets and persistent foreign fund outflows. The Barometer BSE Sensex tumbled 73.48 points or 0.09 percent to close at 81,151.27 while NSE Nifty 50 declined 72.95 points or 0.28 percent to settle at 24,781.10. Most sectors ended in negative territory with Media and Metal stocks being the main drag in yesterday's trading session. Among individual stocks, Tata Consumer and Kotak Mahindra Bank were the major laggards, falling 6.97% and 4.37%, respectively. Conversely, Bajaj Auto was the top performer, rising 4.34%. The fear gauge index, India VIX ended 5.56% higher indicating expectations of significant market volatility in the upcoming trading sessions. On the institutional participation front, Foreign Institutional Investors (FIIs) extended their profit booking journey by divesting shares worth Rs 2,261.83 crore while Domestic Institutional Investors (DIIs) displayed confidence in the market by purchasing shares worth Rs 3,225.91 crore.

Key Economic Events for the Week

Date	Country	Economic event
21-10-2024	CN	Loan Prime Rate 1Y & 5Y
23-10-2024	US	Change in Crude Oil Inventories
23-10-2024	IN	Monetary Policy Meeting Minutes
24-10-2024	JP	Jibun Bank Manufacturing PMI Flash
24-10-2024	JP	Jibun Bank Services PMI Flash
24-10-2024	IN	HSBC Composite PMI Flash
24-10-2024	IN	HSBC Manufacturing PMI Flash
24-10-2024	IN	HSBC Services PMI Flash
24-10-2024	GB	S&P Global Manufacturing PMI Flash
24-10-2024	GB	S&P Global Services PMI Flash
24-10-2024	US	Initial Jobless Claims
25-10-2024	US	Durable Goods Orders MoM

NIFTY vs India VIX



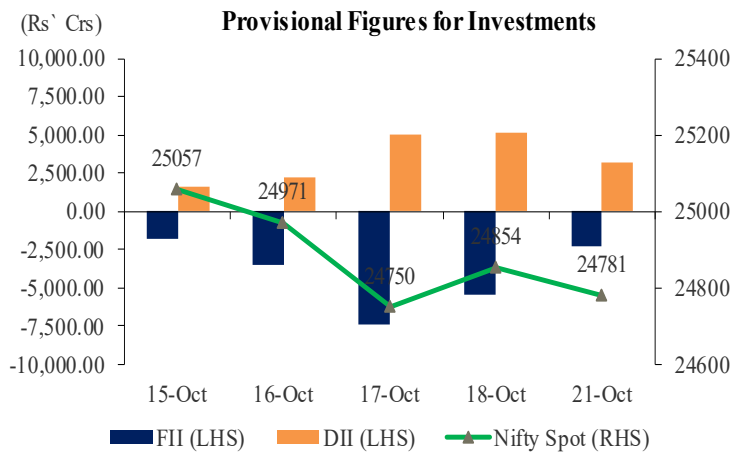
Asian Indices

Live Markets	As on 08.00 hours IST			
	Shanghai	Nikkei	Gift Nifty	Hang Seng
Current Quote	3,276.48	38,404.49	24,811.00	20,588.77
% Change	0.26%	-1.11%	0.13%	0.54%

Sectoral Indices

Index	Last Close	% Change	P/E	Dividend Yield (%)
Sensex	81,151	-0.1	23.83	1.13
Nifty	24,781	-0.3	23.23	1.20
Nifty Midcap 50	16,135	-2.0	47.86	0.70
Nifty Auto	25,252	0.4	24.86	0.87
Nifty Bank	51,963	-0.3	14.52	0.96
Nifty Energy	40,985	-0.5	14.93	2.27
Nifty Fin. Services	23,955	0.1	17.11	0.90
Nifty FMCG	60,280	-1.3	48.12	1.74
Nifty IT	41,563	-1.3	33.53	1.84
Nifty Metal	9,607	-1.5	31.67	2.20
Nifty PSU Bank	6,600	-1.1	7.99	2.25
Nifty Realty	1,033	-1.4	53.64	0.37
Nifty Pharma	23,123	-1.0	38.53	0.58

NIFTY Vs. Institutional Activity



NSE Volume Movement

Particulars	18-Oct-24	21-Oct-24	% Change
Traded Value (Rs. In Crores)	104145	102476	-1.60%
Traded Quantity (in Lakhs)	30075	31095	3.39%
Number of Trades	35538164	35225657	-0.88%
Total Market Cap. (Rs. In Crores)	45464317	45011281	-1.00%



Business News

The company **Bajaj Housing Finance** has reported a 21 percent year-on-year (YoY) increase in net profit, reaching Rs 545.6 crore for the second quarter ending September 30, 2024. This compares to a net profit of Rs 451.1 crore in the same period last year, according to the company's regulatory filing. Revenue from operations also saw a 21.1 percent rise, coming in at Rs 2,410 crore compared to Rs 1,911.5 crore in the year-ago quarter.

The company **Mahindra Logistics** reported a net loss of Rs 9.6 crore for the second quarter ending September 30, 2024, narrowing from a net loss of Rs 15.5 crore in the same period last year. According to the company's regulatory filing, revenue from operations increased by 11.4 percent, reaching Rs 1,521 crore compared to Rs 1,364.8 crore in the corresponding quarter of the previous fiscal.

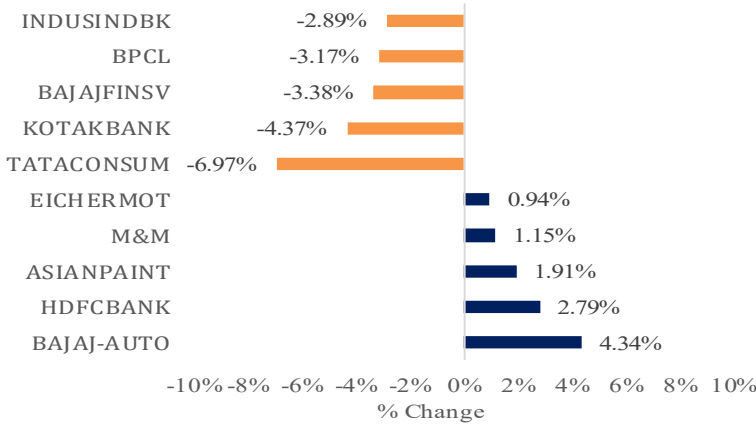
The company **Supreme Petrochem** reported a 15.8 percent year-on-year (YoY) increase in net profit, reaching Rs 90.3 crore for the second quarter ending September 30, 2024, compared to Rs 78 crore in the same period last year, according to its regulatory filing.

The private sector lender **Jana Small Finance Bank** reported a 21.3 percent year-on-year (YoY) decline in net profit, posting Rs 96.7 crore for the second quarter ending September 30, 2024, compared to Rs 122.8 crore in the same period last year. The gross non-performing asset (NPA) ratio increased to 2.97 percent in the September quarter, up from 2.62 percent in the June quarter, while the net NPA stood at 0.99 percent.

The company **Cyient DLM** reported a 5.5 percent year-on-year (YoY) increase in net profit, reaching Rs 15.4 crore for the second quarter ending September 30, 2024, compared to Rs 14.6 crore in the same period last year. According to the company's regulatory filing, revenue from operations surged 33.4 percent, rising to Rs 389.4 crore from Rs 291.8 crore in the year-ago quarter.



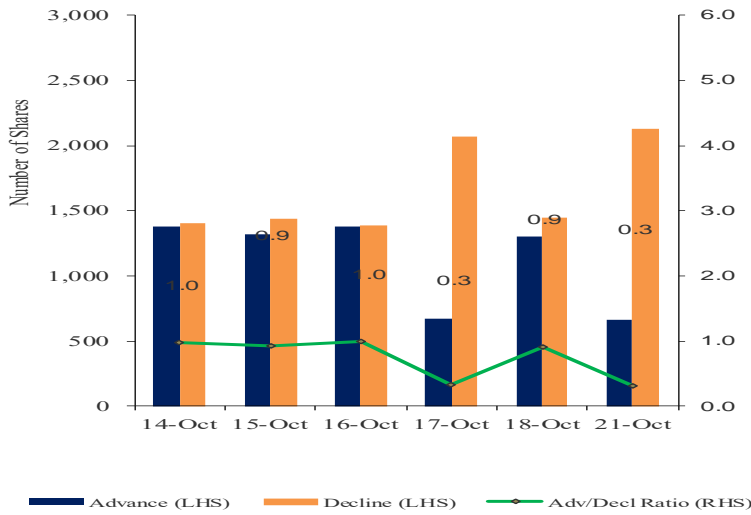
Top Gainers/Losers



Global Indices

Index	Last Close	Change in %
DJIA	42,932	-0.80%
S&P 500	5,854	-0.18%
NASDAQ	18,540	0.27%
FTSE100	8,318	-0.48%
CAC	7,536	-1.01%
DAX	19,461	-1.00%
KOSPI	2,594	0.00%

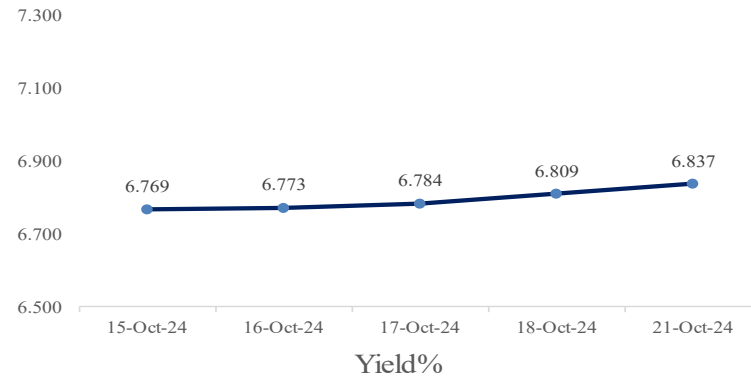
Advance – Decline



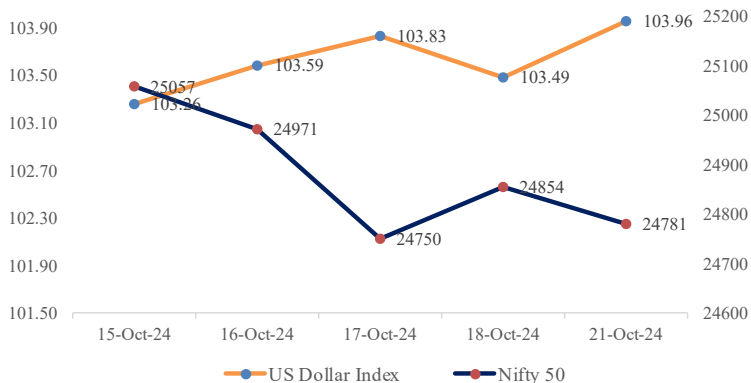
Indian ADR

(Converted to INR)	Prem / (Disc) in (%)		
	Close	NSE Close	1 Day
Infosys	22.20	1852.75	-0.014
Icici Bank	29.52	1259.05	-0.004
Drreddy	78.74	6697.40	-0.006
Hdfc Bank	63.50	1728.70	0.028
Wipro	6.65	548.10	-0.001

10 Years GOI Bond Yield (%)



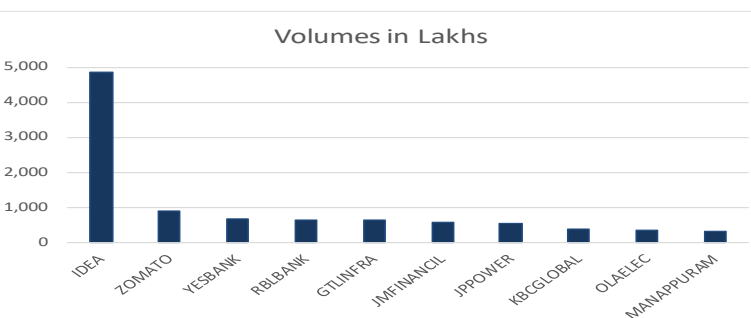
NIFTY vs Dollar Index



Commodities

	Last Close	% Change	YoY (%)
Energy			
Crude Oil ((USD/Bbl)	69.884	-0.22%	-0.17
Brent (USD/Bbl)	74.098	-0.26%	-0.16
Natural Gas (USD/MMBtu)	2.357	1.94%	-0.33
Metals			
Gold (USD/t.oz)	2,729.14	0.28%	0.38
Silver (USD/t.oz)	33.931	0.27%	0.48
Copper(USD/Lbs)	4.337	0.33%	0.21

Volume Shocker



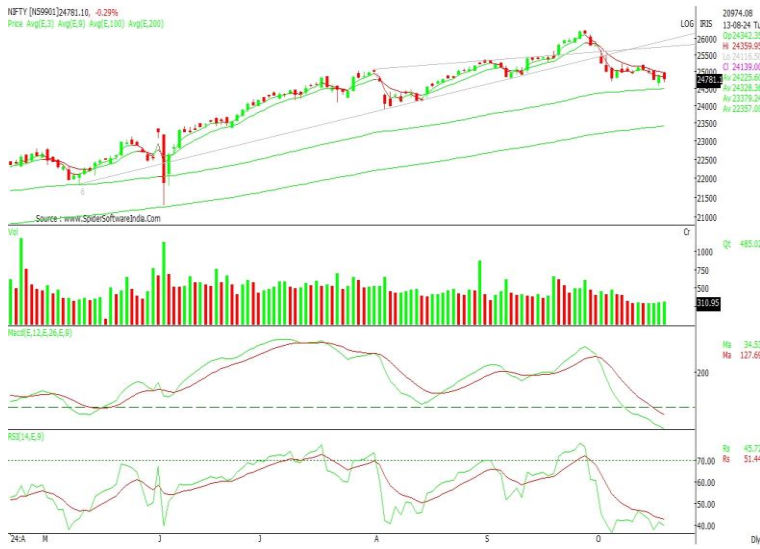
Currency Pair

	Last Close	Change in %
USD/INR	84.092	0.02
GBP/INR	109.545	-0.13
EUR/INR	91.240	-0.03
JPY/INR	0.5610	0.03



Market View from the Technical & Derivatives Research Desk

Nifty



Indian benchmark index NIFTY50, which began Monday's trading day on a positive note due to a sharp uptick in index heavyweight HDFC Bank, failed to sustain their rally as the session progressed. Technically the index witnessed profit booking and closed with negative kind of pattern on daily chart suggesting consolidation may continue. The index has resistance at 24950/25050/25210-240 levels, while on the lower side, the support will be at 24570-520/24470 levels. Breakdown of 24470 would invite further selling pressure and then we could see NIFTY testing at 24300/24190 levels. Keep an eye on Q2FY25 earnings, global markets, ongoing geopolitical tensions and Crude oil price movements, which will weigh on domestic market sentiments.

Bank Nifty



The BANKNIFTY index observed profit booking and closed below its key level of 52000 due to significant fall in index heavyweight stock Kotak Mahindra bank. Technically, the BAKNIFTY index closed with bearish candlestick pattern on daily chart suggesting consolidation may continue and it has resistance 52360 levels. Sustaining above 52360 can move towards 52580/52820 levels. However, on the downside the support will be at 51780/51260 levels. Breakdown of 51260 would invite further selling pressure and then we could see the index testing at 51000 levels. keep an eye on Q2FY25 earnings and ongoing geopolitical tensions which will weigh on domestic market sentiments.

Intraday Stock Picks

Symbol	Buy/Sell	Target	Stoploss
INDIGO	Sell below 4580	4530	4605
CANBK	Sell below 102.50	98	105
BHEL Future	Sell below 247	240	252

Bulk Deals

Company	Acquirer	Qty	Price	Seller	Qty	Price
AFEL	SAVAN RAJENDRAKUMAR PATEL	1,24,176	19.40	ABHI RAJESHKUMAR PATEL	93,418	19.40
SHANGAR	NISHIL SHAH	1,00,000	7.78	NOBLE POLYMERS LIMITED NOBLE	1,05,805	7.78
VIPULLTD	MARWADI SHARES AND FINANCE LIMITED	10,00,000	33.31	NISCHAY HOUSING PRIVATE LIMITED	9,00,000	33.31



Trade ideas - Pivot Point Indicators

Scrip Name	Close	R2	R1	PP	S1	S2	Scrip Name	Close	R2	R1	PP	S1	S2
ACC	2302	2354	2325	2301	2278	2249	CIPLA	1519	1593	1560	1532	1505	1471
AUBANK	665	710	689	672	655	634	COALINDIA	485	504	495	487	480	470
ADANI PORTS	1376	1444	1412	1387	1361	1329	COLPAL	3345	3490	3418	3360	3302	3231
ADANI POWER	602	632	618	607	596	582	CONCOR	845	898	875	855	836	813
ABCAPITAL	215	229	223	218	213	206	COROMANDEL	1601	1664	1632	1605	1579	1546
ABFRL	323	345	335	327	319	310	CROMPTON	404	425	415	407	400	390
AJANT PHARM	3142	3291	3219	3160	3101	3029	CUMMINSIND	3578	3863	3733	3628	3524	3394
ALKEM	6150	6374	6259	6167	6074	5959	DLF	859	904	884	867	850	829
AMBUJACEM	571	588	579	572	565	556	DABUR	569	582	575	570	564	558
APOLLO HOSP	6993	7097	7040	6994	6948	6891	DALBHARAT	1842	1951	1878	1820	1761	1688
APOLLO TYRE	509	525	516	509	502	493	DIVISLAB	5915	6253	6101	5978	5855	5702
ASHOKLEY	218	229	224	220	215	210	DRREDDY	6694	6833	6769	6717	6665	6601
ASIAN PAINT	3043	3112	3068	3034	2999	2956	EDELWEISS	114	129	122	116	111	104
AUROPHARMA	1458	1539	1500	1469	1437	1398	EICHERMOT	4798	4950	4866	4798	4730	4646
DMART	3965	4155	4069	4000	3931	3845	EMAMILTD	698	724	709	698	686	672
AXIS BANK	1189	1237	1215	1196	1178	1156	ENDURANCE	2376	2446	2408	2378	2347	2309
BAJAJ-AUTO	10501	11715	10990	10404	9818	9093	ENGINERSIN	185	193	190	186	183	179
BAJFINANCE	6758	7131	6953	6809	6664	6486	ESCORTS	3745	3895	3825	3768	3711	3641
BAJAJFINSV	1759	1875	1822	1779	1736	1682	EXIDEIND	486	509	498	490	482	471
BAJAJHLDNG	10309	10915	10603	10350	10097	9785	FEDERALBNK	193	200	197	194	191	188
BALKRISIND	2962	3070	3022	2983	2944	2896	FORTIS	603	620	613	606	600	593
BANDHANBNK	184	198	192	187	182	176	IRFC	144	153	149	146	143	139
BANKBARODA	245	256	251	247	243	238	FSL	325	349	339	330	321	310
BANKINDIA	104	108	106	104	103	101	GAIL	219	227	223	220	217	214
BATAINDIA	1434	1506	1469	1439	1409	1372	GMRINFRA	83	88	86	84	82	79
BERGEPAIN	556	574	565	559	552	543	GICRE	380	403	393	385	376	366
BEL	282	292	287	283	279	275	GLENMARK	1714	1797	1757	1725	1693	1654
BHARATFORG	1439	1539	1494	1457	1421	1375	GODREJAGRO	763	785	775	766	757	746
BHEL	247	268	258	250	242	232	GODREJCP	1316	1370	1343	1322	1301	1275
BPCL	331	357	345	336	326	314	GODREJIND	1015	1070	1044	1023	1002	976
BHARTIARTL	1690	1752	1716	1687	1658	1622	GODREJPROP	3040	3298	3176	3077	2979	2856
INSECTICID	799	855	829	809	788	762	GRAPHITE	550	601	578	559	540	516
BIOCON	336	349	343	338	333	327	GRASIM	2712	2804	2763	2730	2697	2656
BBTC	2800	3203	2979	2798	2617	2393	GSPL	391	411	402	394	387	378
BOSCHLTD	36761	37890	37312	36846	36379	35801	HEG	458	521	492	469	445	416
BRITANNIA	5777	5995	5894	5812	5729	5628	HCLTECH	1840	1923	1886	1856	1826	1789
CESC	192	207	200	194	188	181	HDFCAMC	4599	4953	4793	4663	4533	4373
CAMS	4640	4920	4793	4690	4587	4460	HDFCBANK	1725	1779	1751	1728	1705	1677
CANBK	103	108	105	104	102	100	HDFCLIFE	742	765	755	747	739	729
CASTROLIND	217	229	224	219	214	208	HAVELLS	1815	1915	1866	1827	1788	1740
CHOLAFIN	1440	1508	1476	1451	1425	1393	HEROMOTOCO	5242	5427	5298	5194	5089	4960
CUB	150	165	158	153	148	141	HEG	458	521	492	469	445	416

PP – Pivot Point, R1 – Resistance1, S1 – Support, R2 – Resistance2, S2 – Support2: How to trade Pivot points: If the stock opens above PP then go Long and Keep S1 as the stop loss for a possible target of R1/R2. If the stock opens below PP then go short and Keep R1 as the stop loss for a possible target of S1/S2.



Scrip Name	Close	R2	R1	PP	S1	S2	Scrip Name	Close	R2	R1	PP	S1	S2
HINDUNILVR	2685	2781	2737	2701	2666	2622	NBCC	102	113	108	104	100	95
HINDZINC	502	538	521	508	494	478	NHPC	82	87	84	83	81	79
HUDCO	208	225	217	211	205	197	NMDC	225	241	234	228	222	215
ICICIBANK	1258	1290	1274	1260	1247	1230	NTPC	423	437	430	424	418	410
ICICIGI	2021	2160	2094	2041	1988	1922	NATIONALUM	230	242	236	231	226	221
ICICIPRULI	748	766	757	749	741	731	NESTLEIND	2356	2411	2380	2354	2329	2298
IDBI	82	86	84	82	80	78	NAM-INDIA	702	731	717	705	694	680
IDFCFIRSTB	70	73	72	71	70	68	OBEROIRLTY	1989	2074	2026	1988	1949	1902
ITC	483	497	489	483	476	469	ONGC	277	291	284	278	273	265
INDHOTEL	688	747	717	693	668	638	OIL	531	545	536	528	521	512
INFIBEAM	28	30	29	29	28	27	OFSS	11175	12029	11642	11329	11015	10628
INDIANB	514	543	529	517	505	491	PIIND	4410	4842	4637	4470	4304	4099
INDHOTEL	688	747	717	693	668	638	PNBHOUSING	916	963	941	924	906	884
IOC	160	172	166	162	158	152	PAGEIND	44577	47127	45912	44929	43946	42730
IGL	442	478	461	448	435	419	PETRONET	346	355	351	347	343	339
INDUSINDBK	1306	1395	1354	1320	1286	1245	PFIZER	5590	5906	5763	5647	5531	5388
NAUKRI	7920	8340	8150	7997	7844	7655	PIDILITIND	3150	3258	3206	3164	3121	3069
INFY	1850	1946	1900	1862	1825	1778	PEL	1032	1103	1067	1038	1009	974
INDIGO	4590	4811	4707	4622	4538	4433	PFC	463	486	475	466	457	446
IPCALAB	1622	1718	1670	1631	1593	1545	POWERGRID	331	337	334	331	329	325
JSWENERGY	686	717	700	686	672	655	PRESTIGE	1731	1842	1791	1749	1708	1657
JSWSTEEL	981	1023	1004	989	973	954	PGHH	16301	17062	16628	16278	15927	15494
JINDALSTEL	948	994	973	956	939	918	PNB	102	106	104	103	101	99
JUBLFOOD	620	654	638	624	611	594	QUESS	723	795	762	735	709	676
JKCEMENT	4219	4394	4311	4243	4176	4093	RBLBANK	177	211	195	183	170	154
KOTAKBANK	1783	1957	1865	1791	1717	1625	RECLTD	529	563	548	536	523	508
LT	3577	3660	3621	3590	3559	3520	RAJESHXPO	274	288	282	276	271	264
LTTS	5255	5516	5361	5236	5111	4956	RELIANCE	2736	2778	2753	2733	2713	2688
LICHSGFIN	606	638	623	611	599	584	SBILIFE	1707	1836	1776	1727	1678	1617
LTIM	5923	6173	6062	5971	5881	5769	SRF	2280	2400	2340	2291	2242	2181
LUPIN	2145	2265	2208	2161	2115	2057	SHREECEM	24208	24812	24481	24213	23946	23615
MRF	128250	134891	131874	129434	126993	123976	SHRIRAMFIN	3310	3476	3391	3322	3253	3168
MGL	1564	1656	1614	1581	1547	1506	SIEMENS	7489	8185	7865	7605	7346	7026
M&MFIN	289	303	296	290	285	278	SBIN	813	840	827	816	805	792
M&M	2999	3114	3031	2964	2897	2814	SAIL	127	135	131	128	125	121
MANAPPURAM	146	163	155	149	143	135	SJVN	119	126	123	120	118	114
MRPL	158	166	162	159	155	151	SUNPHARMA	1891	1942	1919	1901	1882	1859
MARICO	663	680	671	664	656	647	SUNTV	755	782	768	756	745	730
MARUTI	12140	12534	12300	12112	11923	11689	SYNGENE	854	907	883	864	844	820
MFSL	1193	1239	1215	1195	1175	1151	TVSMOTOR	2741	2846	2777	2721	2665	2596
LICI	923	975	952	933	914	890	TCS	4071	4190	4137	4094	4050	3997
MOTHERSON	199	212	206	202	197	191	TATACOMM	1855	1950	1905	1870	1834	1790
MPHASIS	2979	3251	3129	3031	2933	2811	TATASTEEL	155	160	158	156	154	151
NATCOPHARM	1370	1438	1407	1382	1357	1326	TATAMOTORS	903	933	918	906	894	879

PP – Pivot Point, R1 – Resistance1, S1 – Support, R2 – Resistance2, S2 – Support2: How to trade Pivot points: If the stock opens above PP then go Long and Keep S1 as the stop loss for a possible target of R1/R2. If the stock opens below PP then go short and Keep R1 as the stop loss for a possible target of S1/S2.



Scrip Name	Close	R2	R1	PP	S1	S2	Scrip Name	Close	R2	R1	PP	S1	S2
TATAPOWER	454	478	466	456	446	434	VGUARD	426	450	439	430	421	410
TATASTEEL	155	160	158	156	154	151	VARROC	555	596	577	561	545	525
TECHM	1695	1815	1760	1716	1671	1616	VBL	579	618	599	583	568	548
NIACL	207	222	215	210	204	197	VEDL	475	501	489	479	470	458
RAMCOCEM	833	867	851	839	826	810	IDEA	9	10	9	9	8	8
TITAN	3355	3487	3422	3370	3318	3254	VOLTAS	1814	1937	1878	1831	1784	1725
UPL	544	578	563	550	538	522	WHIRLPOOL	2332	2442	2385	2339	2292	2235
ULTRACEMCO	10839	11472	11170	10926	10681	10379	WIPRO	547	573	561	552	543	531
UNIONBANK	112	116	114	112	111	108	YESBANK	21	22	22	21	21	20
FLUOROCHEM	4809	5039	4889	4767	4646	4495	ZEEL	126	144	136	129	123	115
UBL	1961	2033	1996	1967	1937	1900	ZYDUSLIFE	1007	1050	1030	1013	996	975
Index Name	Close	R2	R1	PP	S1	S2	Index Name	Close	R2	R1	PP	S1	S2
NIFTY 50	24781	25226	24998	24813	24628	24400	NIFTY FMCG	60280	61889	61062	60393	59724	58897
NIFTY MIDCAP 50	16135	16869	16535	16266	15996	15663	NIFTY IT	41563	43443	42581	41884	41188	40326
NIFTY AUTO	25252	25934	25489	25130	24770	24325	NIFTY METAL	9607	10052	9850	9687	9523	9321
NIFTY BANK	51963	53130	52578	52132	51685	51133	NIFTY PHARMA	23123	23798	23483	23228	22973	22658
NIFTY ENERGY	40985	41915	41447	41069	40690	40222	NIFTY PSU BANK	6600	6841	6731	6641	6551	6441
NIFTY FINANCIAL SE	23955	24457	24217	24023	23828	23588	NIFTY REALTY	1033	1082	1059	1040	1022	999

PP – Pivot Point, R1 – Resistance1, S1 – Support, R2 – Resistance2, S2 – Support2: How to trade Pivot points: If the stock opens above PP then go Long and Keep S1 as the stop loss for a possible target of R1/R2. If the stock opens below PP then go short and Keep R1 as the stop loss for a possible target of S1/S2.

**Research Desk**

S. Devarajan	Head Technical & Derivatives Research	devarajan.s@way2wealth.com
Jebaris Nadar	Research Associate	jebarisn@way2wealth.com

Disclaimer

Analyst Certification: I, Devarajan Sadasivam, research analyst and author of this report, hereby certify that the views expressed in this research report accurately reflect our personal views about the subject securities, issuers, products, sectors or industries. It is also certified that no part of the compensation of the analyst(s) was, is, or will be directly or indirectly related to the inclusion of specific recommendations or views in this research. The analyst(s), principally responsible for the preparation of this research report, receives compensation based on overall revenues of the company (Way2Wealth Brokers Private Limited, hereinafter referred to as Way2Wealth) and has taken reasonable care to achieve and maintain independence and objectivity in making any recommendations.

It is confirmed that the author of this report has not received any compensation from the companies mentioned in the report in the preceding 12 months. Our research professionals are paid in part based on the profitability of Way2Wealth, which include earnings from other business. Neither Way2Wealth nor its directors, employees, agents or representatives shall be liable for any damages whether direct or indirect, incidental, special or consequential including lost revenue or lost profits that may arise from or in connection with the use of the information contained in this report.

This report is for the personal information of the authorized recipient and does not construe to be any investment, legal or taxation advice to you. Way2Wealth is not soliciting any action based upon it. Nothing in this research shall be construed as a solicitation to buy or sell any security or product, or to engage in or refrain from engaging in any such transaction. The contents of this material are general and are neither comprehensive nor appropriate for every individual and are solely for the informational purposes of the readers. This material does not take into account the specific objectives, financial situation or needs of an individual/s or a Corporate/s or any entity/s.

This research has been prepared for the general use of the clients of the Way2Wealth and must not be copied, either in whole or in part, or distributed or redistributed to any other person in any form. If you are not the intended recipient you must not use or disclose the information in this research in any way. Though disseminated to all the customers simultaneously, not all customers may receive this report at the same time. Way2Wealth will not treat recipients as customers by virtue of their receiving this report. The distribution of this document in other jurisdictions may be restricted by the law applicable in the relevant jurisdictions and persons into whose possession this document comes should inform themselves about, and observe any such restrictions.

The report is based upon information obtained from sources believed to be reliable, but we do not make any representation or warranty that it is accurate, complete or up to date and it should not be relied upon as such. Way2Wealth or any of its affiliates or employees makes no warranties, either express or implied of any kind regarding any matter pertaining to this report, including, but not limited to warranties of suitability, fitness for a particular purpose, accuracy, timeliness, completeness or non-infringement. We accept no obligation to correct or update the information or opinions in it. Way2Wealth or any of its affiliates or employees shall not be in any way responsible for any loss or damage that may arise to any person from any inadvertent error in the information contained in this report. The recipients of this report should rely on their own investigations. In no event shall Way2Wealth be liable for any damages of any kind, including, but not limited to, indirect, special, incidental, consequential, punitive, lost profits, or lost opportunity, whether or not Way2Wealth has advised of the possibility of such damages.

This material contains statements that are forward-looking; such statements are based upon the current beliefs and expectations and are subject to significant risks and uncertainties. Actual results may differ from those set forth in the forward-looking statements. These uncertainties include but are not limited to: the risk of adverse movements or volatility in the securities markets or in interest or foreign exchange rates or indices; adverse impact from an economic slowdown; downturn in domestic or foreign securities and trading conditions or markets; increased competition; unfavourable political and diplomatic developments; change in the governmental or regulatory policies; failure of a corporate event and such others. This is not an offer to buy or sell or a solicitation of an offer to buy or sell any security or instrument or to participate in any particular trading strategy. No part of this material may be copied or duplicated in any form by any means or redistributed without the written consent of Way2Wealth. In no event shall any reader publish, retransmit, redistribute or otherwise reproduce any information provided by Way2Wealth in any format to anyone. Way2Wealth and its affiliates, officers, directors and employees including persons involved in the preparation or issuance of this report may from time to time have interest in securities / positions, financial or otherwise in the securities related to the information contained in this report.

Investment in securities market are subject to market risks. Read all the related documents carefully before investing.

Registration granted by SEBI, membership of BASL (in case of IAs) and certification from NISM in no way guarantee performance of the intermediary or provide any assurance of returns to investors.

Way2Wealth Brokers Pvt. Ltd. (CIN U67120KA2000PTC027628) SEBI Rgn. No. : INH200008705.

Registered Office:Rukmini Towers, 3rd& 4thFloor, # 3/1, Platform Road, Sheshadripuram, Bangalore - 560 020,

Website: www.way2wealth.com Email: research@way2wealth.com

Way2wealthResearch is also available on Bloomberg WTWL<GO>