

Installation Guide for Antara Trading Platform/ Investor EXE

Installation Guide - Antara Trader EXE	1
Synopsis	2
.NET Framework Links :	2
Install .net Framework	3
Error installing .NET Framework Root Certificate Error/ Certificate Chain	3
Error: A certificate chain could not be built to a trusted root certificate	3
Error: A certificate chain processed but terminated in a root certificate not trusted by the trust provider.	5
Errors Missing Service Pack on Windows 7 installing .NET Framework	5

Synopsis

Antara Trader EXE requires .NET Framework 4.6.2 as a prerequisite.

You should not have any trouble installing Antara Trader EXE if you have .NET Framework 4.6.2 already installed.

Windows 10 generally supports the framework and installing the same should be a straightforward task.

However Windows 7 may face difficulties as its out of Microsoft support. This document tries to document the solutions to some of the issues faced.

.NET Framework Links :

Web Installer: This installer requires an internet connection for installing the framework
<https://dotnet.microsoft.com/download/dotnet-framework/thank-you/net462-web-installer>

Standalone Installer: This installer is larger and does not require an internet connection.
<https://www.microsoft.com/en-us/download/confirmation.aspx?id=53344>

Check .Net Versions installed with the tool

[Option 1](#)

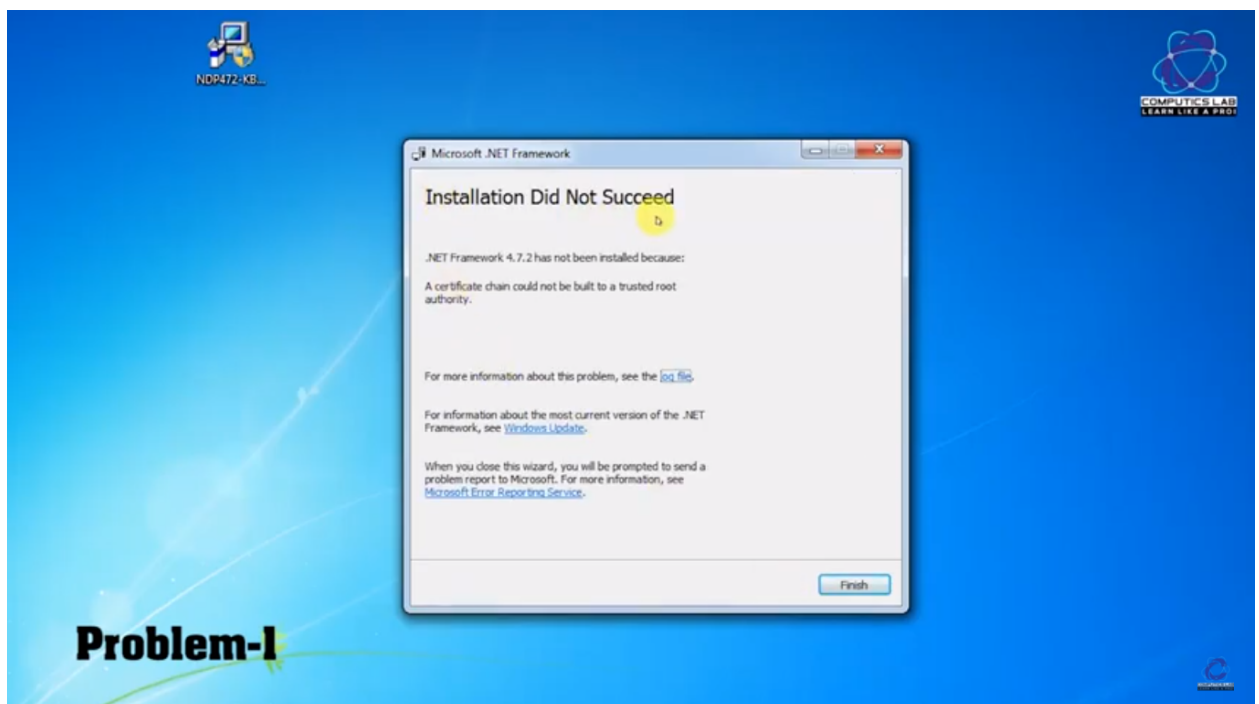
OS version	Instruction
Windows 10 64 bit	
Windows 10 32 bit	
Windows 7 32 bit	Requires Service Pack 1
Windows 7 64 bit	Requires Service Pack 1

Install .net Framework

Download the .NET Framework [installer](#). After installation reboot the machine and install Antara Trader.

Error installing .NET Framework Root Certificate Error/ Certificate Chain

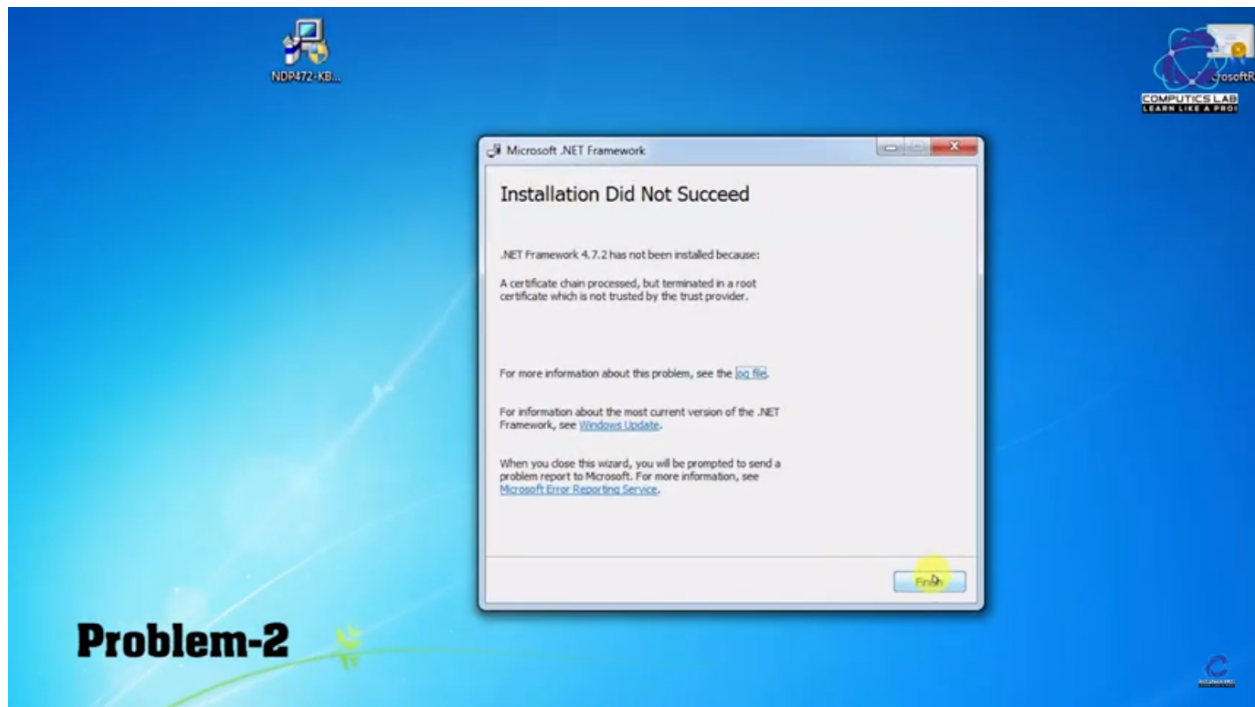
Error: A certificate chain could not be built to a trusted root certificate



Solution:

1. Download the root certificate from <http://download.microsoft.com/download/2/4/8/248D8A62-FCCD-475C-85E7-6ED59520FC0F/MicrosoftRootCertificateAuthority2011.cer>
2. Install this certificate.
3. Install .NET framework

Error: A certificate chain processed but terminated in a root certificate not trusted by the trust provider.



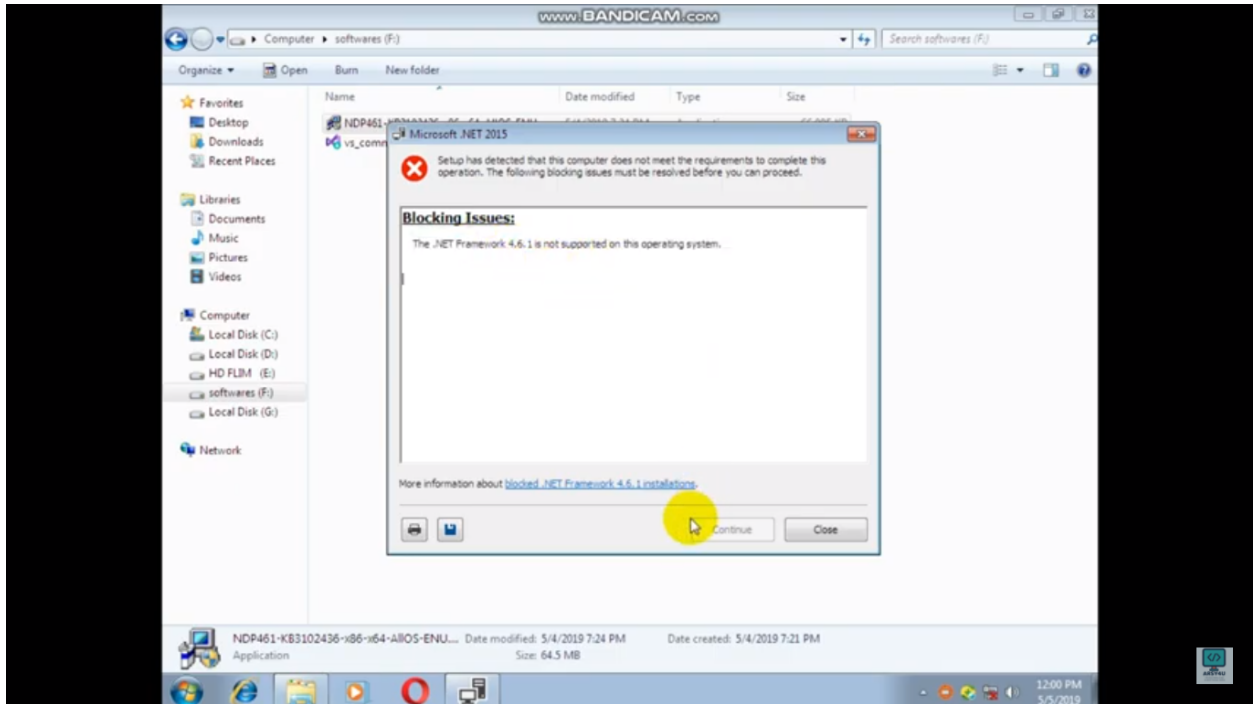
Solution:

Import the root certificate into trusted certificates of the system. Follow steps in video from time 3:15 <https://youtu.be/XB2oCSWER2g?t=195>

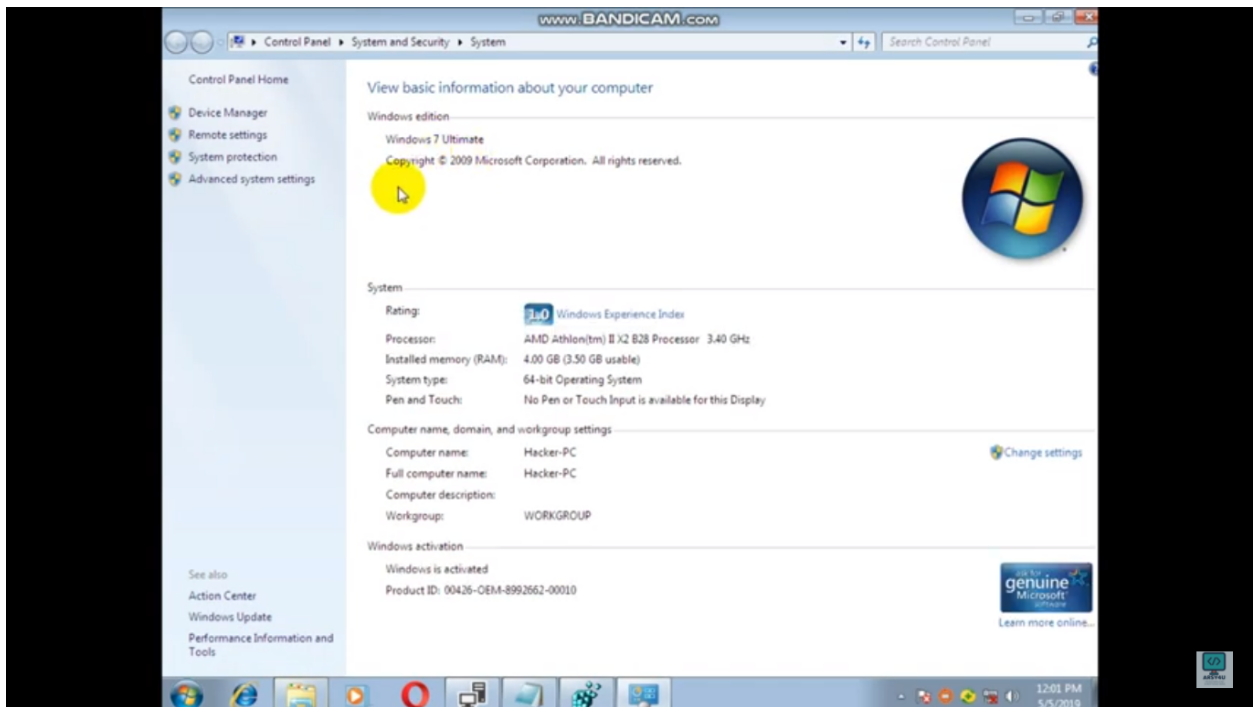
Errors of Missing Service Pack on Windows 7 installing .NET Framework

Installing .net Framework 4.6.2 requires Service Pack 1.

Error : The .NET Framework is not supported in the operating system



Make sure Service Pack is installed SP1 from computer properties

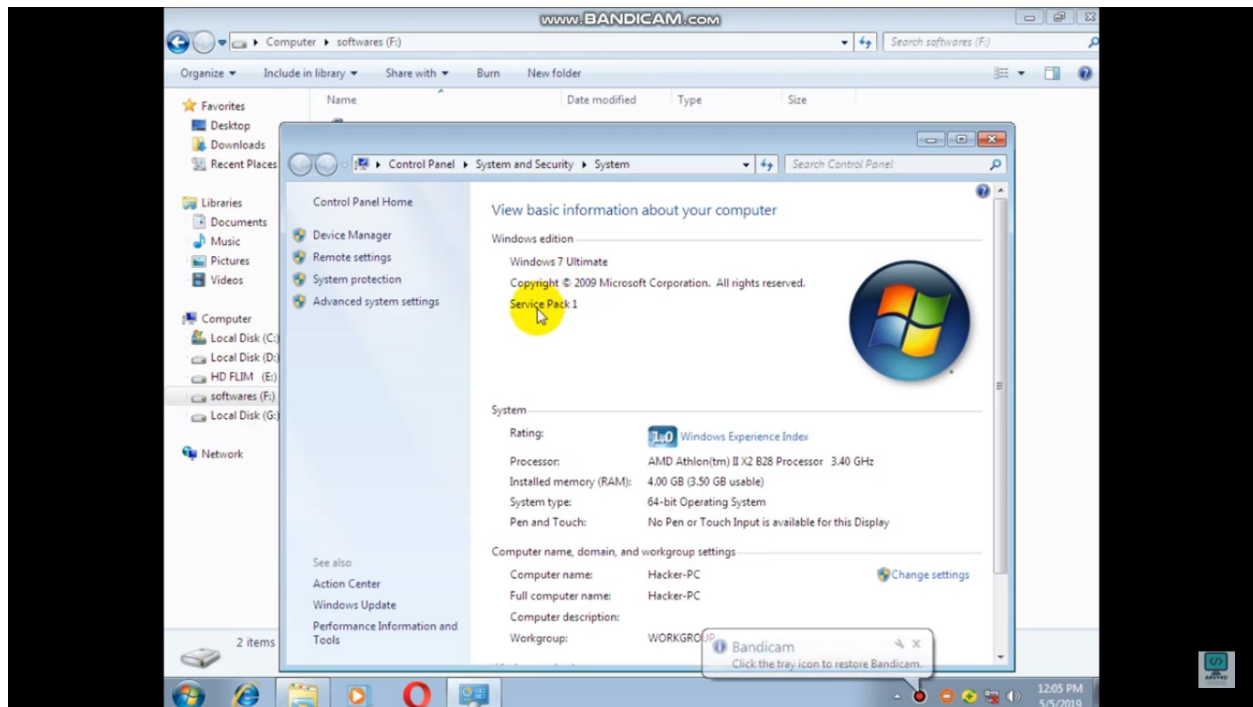


Follow the step in the link [Install Windows 7 Service Pack 1 \(SP1\) \(microsoft.com\)](#)
Try [Microsoft Update Catalog](#)

Or

Follow the steps in the video https://www.youtube.com/watch?v=z_9f5WISM5I

You will see the Service Pack 1 as below

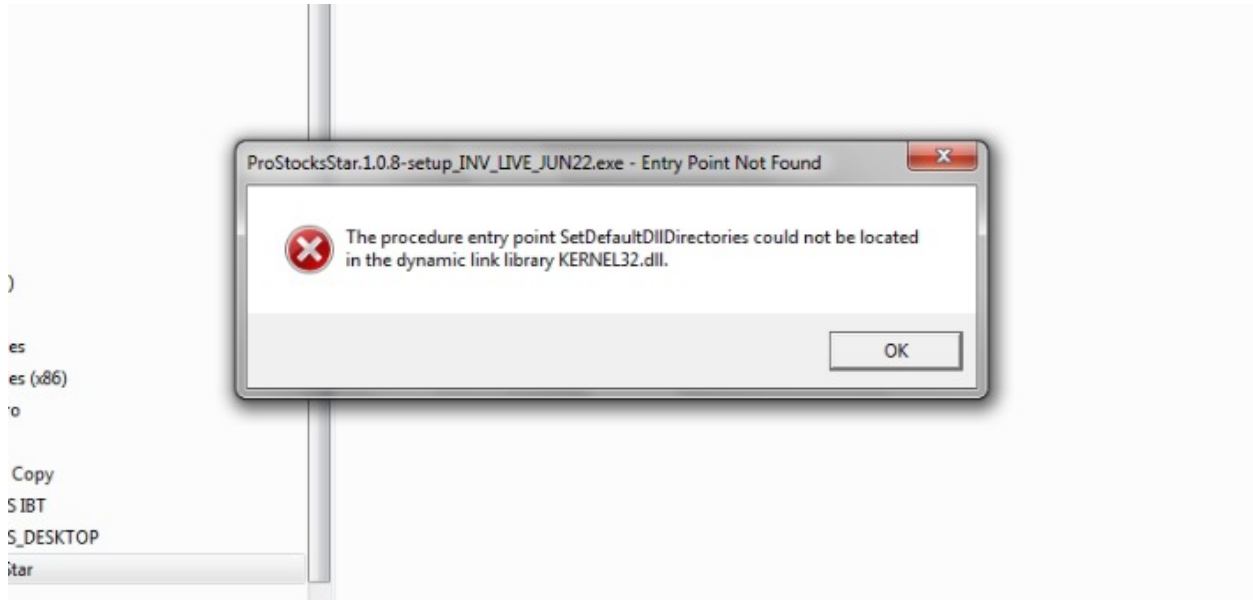


Registry tweak

- Check if windows updates work. If not below steps to be done.

HKEY_LOCAL_MACHINE -> SYSTEM -> ControlSet001 -> Control -> Windows. Double click on CSDVersion on right side. It will show a popout screen with 0. Make it 100

Error while running Installation



<https://www.microsoft.com/en-us/download/details.aspx?id=35936>

Windows 8.1 error

[Download Windows Server 2012 R2 Update \(KB2919355\) from Official Microsoft Download Center](#)

The updates must be installed in the following order: clearcompressionflag.exe, KB2919355, KB2932046, KB2959977, KB2937592, KB2938439, and KB2934018.

In case of KB2919355


[KB2919355 The update is not applicable to your computer - LemonBits](#)

<https://www.microsoft.com/en-us/download/confirmation.aspx?id=43530>

v6.1-KB2758857
-KB3151800-x86

Date modified Type Size

Microsoft .NET 2015

 Setup has detected that this computer does not meet the requirements to complete this operation. The following blocking issues must be resolved before you can proceed.

Blocking Issues:

The [update corresponding to KB2919355](#) needs to be installed before you can install this product on Windows 8.1 or Windows Server 2012 R2.

More information about [blocked .NET Framework 4.5.2 installations](#).

